

WIENERBERGER FACADES

ROOF / BRICK / PAVER / **FACADE** / BLOCK




Wienerberger

WIENERBERGER

Wienerberger is the UK's leading provider of wall, roof and landscaping innovations. We offer one of the broadest product portfolios in the construction business, including clay facing bricks (stock and wire-cut), specialist engineering bricks, the Porotherm clay block system, façade solutions including SVK fibre cement panels, the Corium cladding system and a wide range of brick slips. We also offer a full range of Sandtoft and Koramic clay, concrete and slate roofing products, Keymer handmade roof tiles, bespoke heritage products and a range of domestic and commercial pavers.

Founded in 1819 and with headquarters in Vienna, Wienerberger Building Solutions is the world's largest producer of bricks and clay blocks, as well as being the market leader for clay roof tiles. Represented in 30 countries with 197 production sites, Wienerberger celebrated its 200-year anniversary in 2019.

Find out more about our products and services at www.wienerberger.co.uk



CONTENTS

Introduction To Wienerberger	2
Wienerberger Facades	4-5
Corium	6-7
What is Corium?	8-9
Certificates & Standards	10-11
Installation	12-13
Tiles	14-15
Design Details	16-17
Colours & Textures	18-19
Case Studies	22-25
SVK	26-27
What Is SVK?	28-29
Certificates & Standards	30-31
Features & Benefits	32-33
Installation	34-35
The Collection	36-37
At a Glance	38-39
Colours	40-47
Case Studies	48-51



Above | **Private Residence, Wallonia, Belgium**
SVK Colormat Scripto Jasmine, Slate and Storm

Cover | **City Centre Campus, Manchester College**
Corium | image © Christian Smith

© Wienerberger Ltd 09/23. All rights reserved. N.B.
Due to the limitations of the printing process and screen calibration settings when viewing the online version, you are advised to obtain product samples prior to purchase. All information contained in this book is believed to be correct at the time of going to press. Wienerberger reserve the right to add, delete or alter products without notice and recommend you contact us to obtain the latest information.

WIENERBERGER FACADES

Building upon the strong foundations of our longstanding brick expertise, Wienerberger Facades are here to help you shape the changing face of construction, covering every dimension that needs to be considered when specifying for the evolving world of facades.

In our dedication to creating a better building envelope, Wienerberger Facades are regulating expectations by complying to industry standards for architectural cladding and achieving vital certification through rigorous testing.

We are raising standards in the brick wall cladding and fibre cement panel markets by only offering products of the highest quality and performance specifications.

We are redefining possibilities in terms of cladding design with truly versatile materials that have the potential to create the facades of the future.

Corium Brick Rainscreen Cladding System

- Corium, a brick cladding system that combines design versatility, fast track installation and durability in one BBA certified and A1 rated* facade solution.

SVK Fibre Cement Rainscreen Panels

- SVK is a facade range which unites the aesthetic elements of colour and texture with durability and performance in an A2 rated fibre cement cladding panel.

For more information about our facade systems or to contact a member of our team to discuss your project please visit our website www.wienerberger.co.uk

* Corium brick tiles are classified as A1 in accordance with BS EN 13501-1. | Steel backing rails are also classified as A1. | Corner units supplied by Wienerberger for 90 degree external corners and angles are cut and bonded using an A2 rated adhesive.



CAVO
SEA SIDE HOTEL

CAVO
SEA SIDE HOTEL



Central Mosque, Cambridge, UK
Corum

Corium



WHAT IS CORIUM?

Corium consists of clay brick tiles, clipped into interlocking steel backing sections mounted horizontally or vertically. It is suitable for use on steel framed substrate walls, concrete, external masonry and timber frame of both new and existing buildings.

Safety

- BBA approved and certified.
- As a fired clay product Corium brick tiles are inherently non combustible and classified as A1¹ in accordance with BS EN 13501-1.
- Corium can satisfy or contribute to satisfying the relevant requirements in relation to NHBC standards.

Design Flexibility

- Over 2,500 brick tile finishes available, including choices of colour and texture.
- The option to develop bespoke blends for projects.
- Variable tile height options of 50mm, 65mm, 140mm and 215mm.
- Can be installed horizontally or vertically, including soffits and ceilings.

Performance

- A design life in excess of 35 years in accordance with section 10 of the BBA certificate.
- No build limit, with installations on projects in the UK up to 28 storeys (as per section 6.2 of the BBA certificate)².
- Simple mechanical fix installation.

¹ Corium brick tiles are classified as A1 in accordance with BS EN 13501-1. | Steel backing rails are also classified as A1. | Corner units supplied by Wienerberger for 90 degree external corners and angles are cut and bonded using an A2 rated adhesive.

² Design wind actions must be calculated in accordance with BS EN 1991-1-4 : 2005 and its UK National Annex. Due consideration should be given to higher pressure coefficients applicable to corners of the building, as recommended in this Standard. In accordance with BS EN 1990 : 2002, it is recommended that a partial load factor of 1.5 is applied to determine the design wind load to be resisted by the system. Please see the BBA certificate for full information.







CORIUM: CERTIFICATES & STANDARDS

We have made sure that Corium meets rigorous safety criteria. All the certification and reassurance you need to feel confident.

BBA Certified

- Certified for use as protective/decorative cladding over external masonry, timber, concrete or steel-frame substrate walls of new and existing buildings (as per page 1 of the BBA certificate).

Fire Tested & Certified

- Classified as 'non-combustible' and not subject to any restriction on building height or proximity to boundary when used on a non-combustible substrate and with non-combustible components (as per section 7.2 of the BBA certificate).

NHBC Standards

- In the opinion of the BBA (page 3 of the certificate), Corium can satisfy or contribute to satisfying the relevant requirements in relation to NHBC standards, Part 6 Superstructure (excluding roofs) and Chapter 6.9 Curtain walling and cladding.



A1 fire rated*



BBA Certified



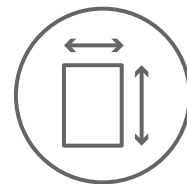
Impact tested



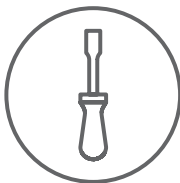
Can satisfy NHBC standards



Broad range of colours and textures



Various size options available



Easy to install



50% lighter than traditional brick



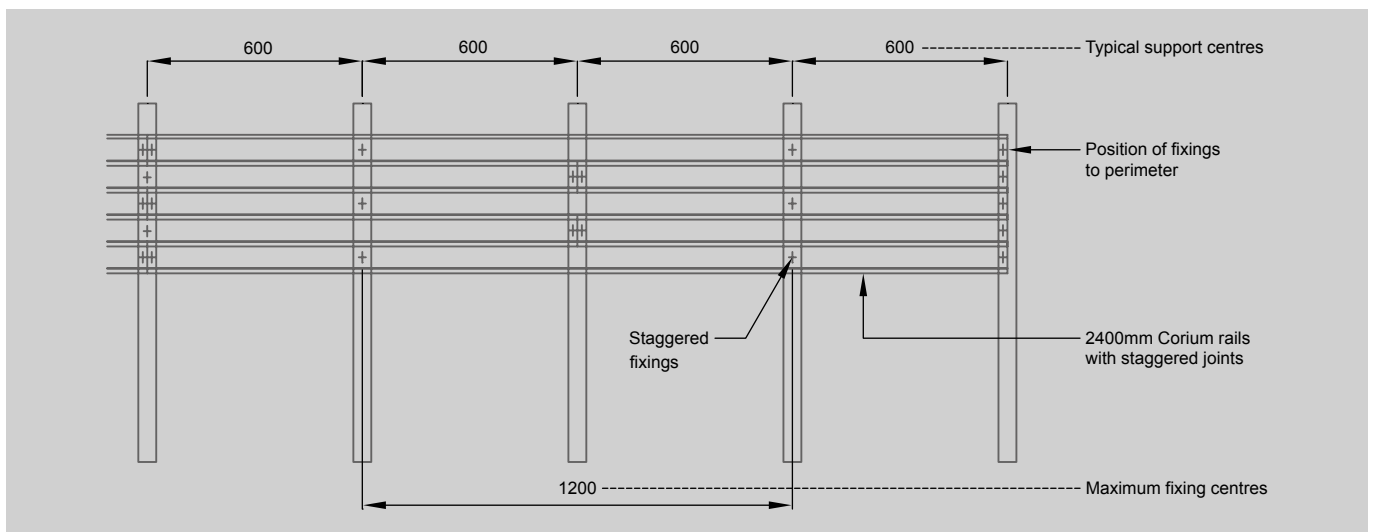
35 years design life

* Corium brick tiles are classified as A1 in accordance with BS EN 13501-1. | Steel backing rails are also classified as A1. | Corner units supplied by Wienerberger for 90 degree external corners and angles are cut and bonded using an A2 rated adhesive.

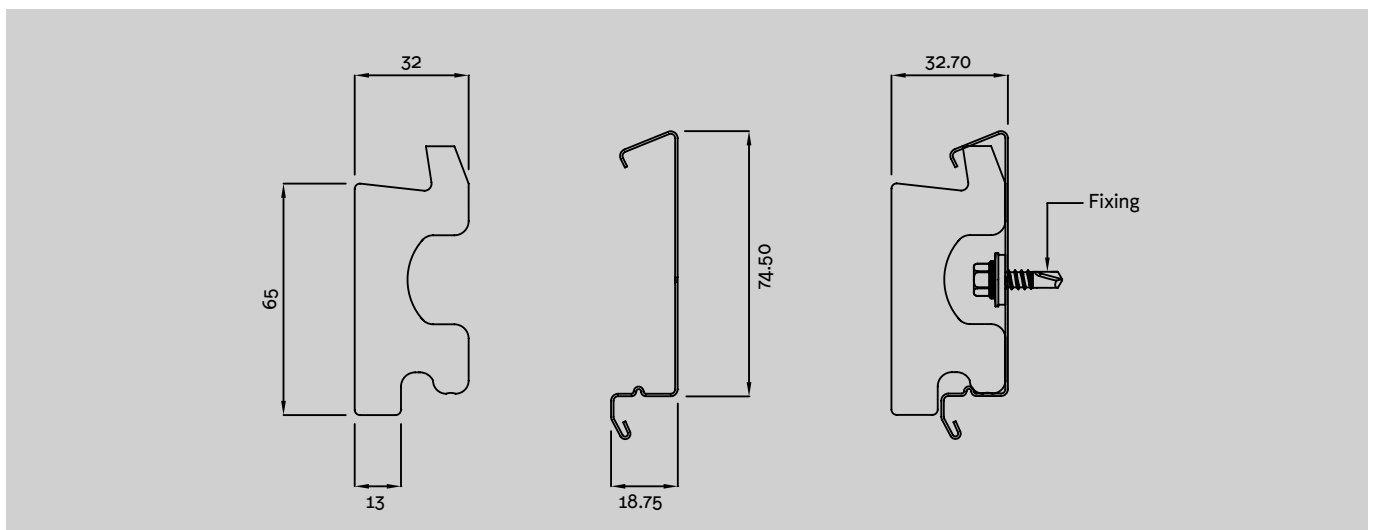
CORIUM: INSTALLATION

Corium is a system designed for adaptability and performance. The system comprises of fired clay extruded brick tiles, which are clipped into longitudinally interlocking steel backing sections. The vertical and horizontal joints between the tiles are pointed with Parex Historic Mortar KL.

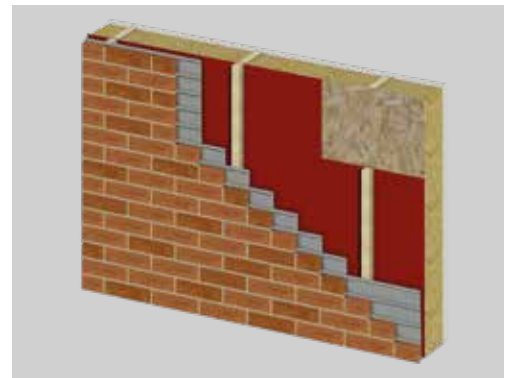
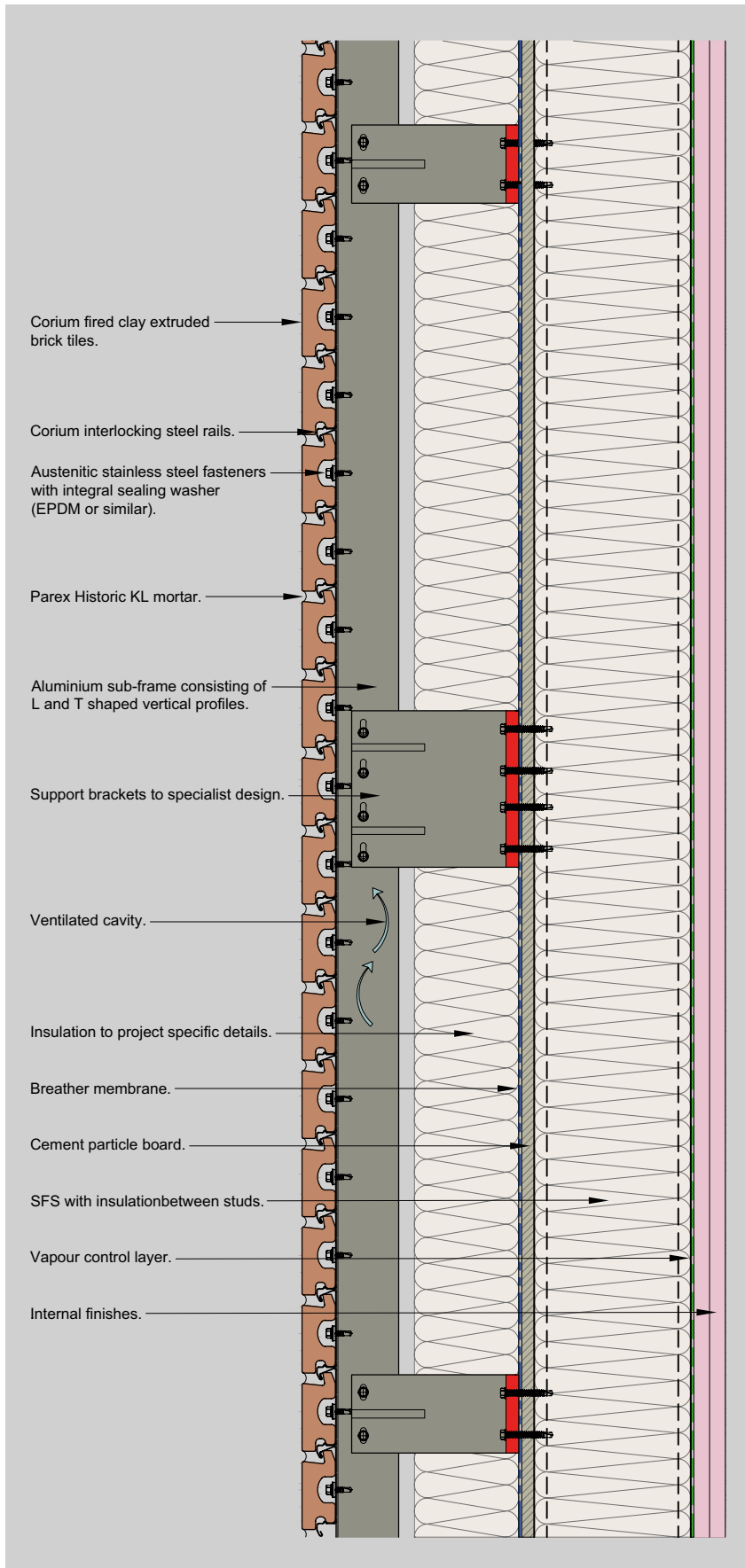
The steel backing sections are profiled to suit the brickwork coursing height, mounted horizontally or vertically and then mechanically fixed to the supporting subframe. For lightweight steel frame and masonry substrates, the subframe is generally aluminium, but for timber-frame structures this would be timber battens.



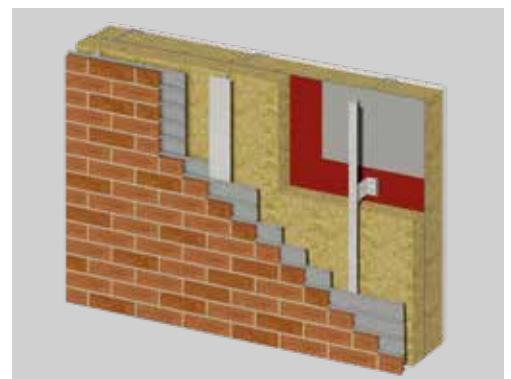
Typical fixing pattern of the Corium Brick Tile Cladding System



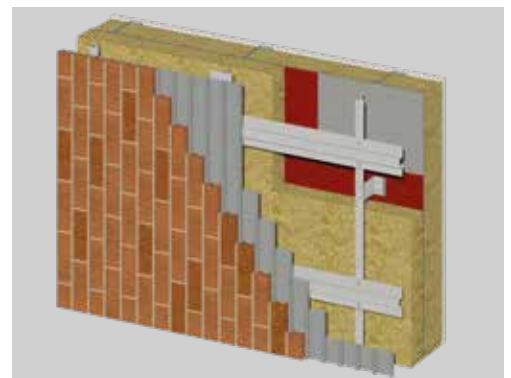
Corium Tile & Steel Backing Profile (Dimensions in mm)



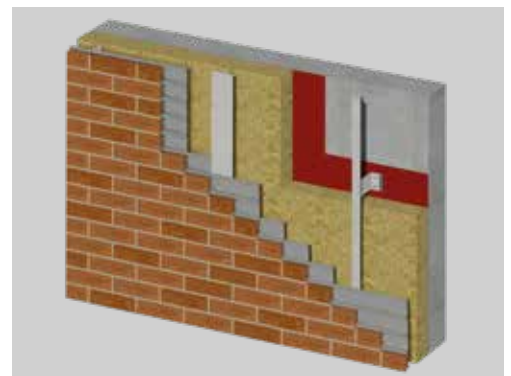
Timber frame



Lightweight steel frame



Lightweight steel frame - Vertical



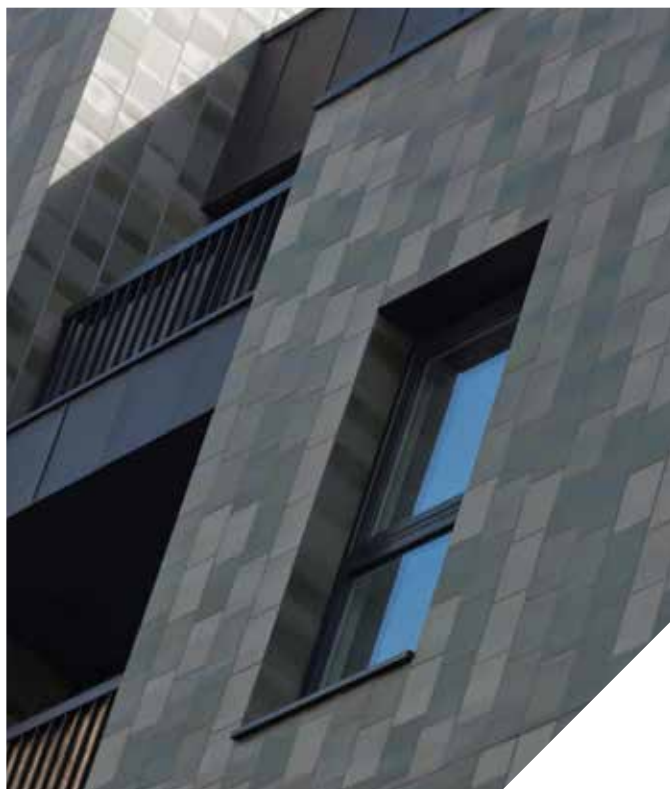
Concrete

Typical wall build-up for standard 65mm Corium Brick Tile

Use of and reliance on this drawing/document is at your own risk. Wienerberger is not responsible for any reliance or actions taken based on this drawing/document and all and any such responsibility and liability of Wienerberger (whether in contract, tort (including negligence), misrepresentation, under any statute or otherwise) is expressly excluded.

CORIUM: TILES

Offering authentic brick aesthetics with an unrivalled choice of colours, textures, standard and bespoke sizes, and even premade corners. All of which can be installed on a range of substructures, for complete versatility. It all combines in Corium, redefining what's possible in cladding.



City Park West, Chelmsford, UK
Corium large format tiles



50mm height tile



65mm height tile
Standard UK brick format



140mm height tile



215mm height tile
Large format

Size Options

Height (mm)

50, 65, 140, 215

Length (mm)

215 (other lengths available up to 327mm)

Thickness (mm)

32, 52, 80*

Tile lip thickness (mm)

13

*CWCT tested but not included in the BBA.



CM.1B
Cut and bonded external return tile (LH or RH)



CM.2B
Cut and bonded stop end tile (LH or RH)



CM.3
Soldier tile



15mm projecting tile



20mm projecting tile



CM.4
Air brick tile



CM.5
Soffit return tile



Paxton Primary School, Lambeth, UK
Corium 50mm projecting tiles



50mm projecting tile

Special tiles

The system is designed with flexibility in mind, so corners are no obstacle. Tiles can be cut and bonded on site or at one of our trusted fabricators.

Projecting Tiles

Currently there are 3 different sizes:

Height (mm)
50, 65

Length (mm)
215

Projection (mm)
15 (50mm height), 20 & 50 (65mm height)

CORIUM: DESIGN DETAILS

Corium is a flexible, functional and imaginative brick cladding system with design potential that goes beyond the traditional look of brickwork to create truly unique projects.

Realising new frontiers of architectural possibilities means unleashing the design flexibility of Corium – across the building envelope or in statement sections – with local facades support and a nationwide network of recognised installers.

The facades of the future require versatility of design, efficiency of installation, and true architectural freedom. Corium is here to meet this challenge – redefining possibilities.



Lobby, Vibe Hotel, Darling Harbour, Sydney, Australia
Corium

Curves, Horizontal & Vertical Fitting

The system can be installed horizontally, vertically, or even at an angle, with no impact on performance, safety or durability (as per page 1 of the BBA certificate). This unlocks a wider range of aesthetic options as the system allows any brick bond pattern to be used.

Arches and curves are also achievable using Corium. Curves with a radius over 2m can be achieved easily, smaller radii can be achieved by cutting rails into shorter sections or installing the system vertically.

Off-Site Assembly

If projects require it, Corium can be assembled off-site, allowing for finished sections to be installed as a pre-fabricated solution to be pointed on site.

This method not only ensures quality controlled factory conditions during fabrication, but it allows for rapid construction without delays due to weather, reducing wastage and on-site construction time.



Wilson Secondary School, Virginia, USA
Corium

Soffits

With both horizontal and vertical installations supported, as per page 1 of the BBA Certificate, Corium can be used overhead to create soffits and ceilings. A common feature found across both refurbishment and contemporary schemes.



Parex Historic Mortar KL colours
Bespoke mortar colours available on request

Mortar

Joints between the tiles are pointed with Parex Historic Mortar KL, which is a hydrated lime, sand and ground granulated blast furnace slag (GGBS) mortar manufactured to BS EN 998-2 : 2016. The mortar is applied using manual, mechanical or compressed air based pumps with controlled nozzle applicators. The preferred joint profile is bucket-handle.

CORIUM: COLOURS & TEXTURES

Colours

Our extensive range of colours enables true aesthetic choice for your project. Traditional or contemporary, eclectic or uniform, there's a colour or blend to suit. Choose from a wide variety of standard colours, or get in touch to discuss how a bespoke blend could help make Corium the right choice for your scheme.

For more information please visit our website:
www.wienerberger.co.uk/products/facades

Textures

From the nuanced feel of traditional brick, to smooth, contemporary glazed tiles, Corium can define the look and feel of your building with a range of textures and finishes available to suit any scheme or style.



The Ritterman Building, Middlesex University, UK



Smooth



Gloss glazed



Dragface with crease



Dragface without crease



Echo Central, Leeds, UK



The Place, Sydney, Australia



Sanded with crease



Handformed creased



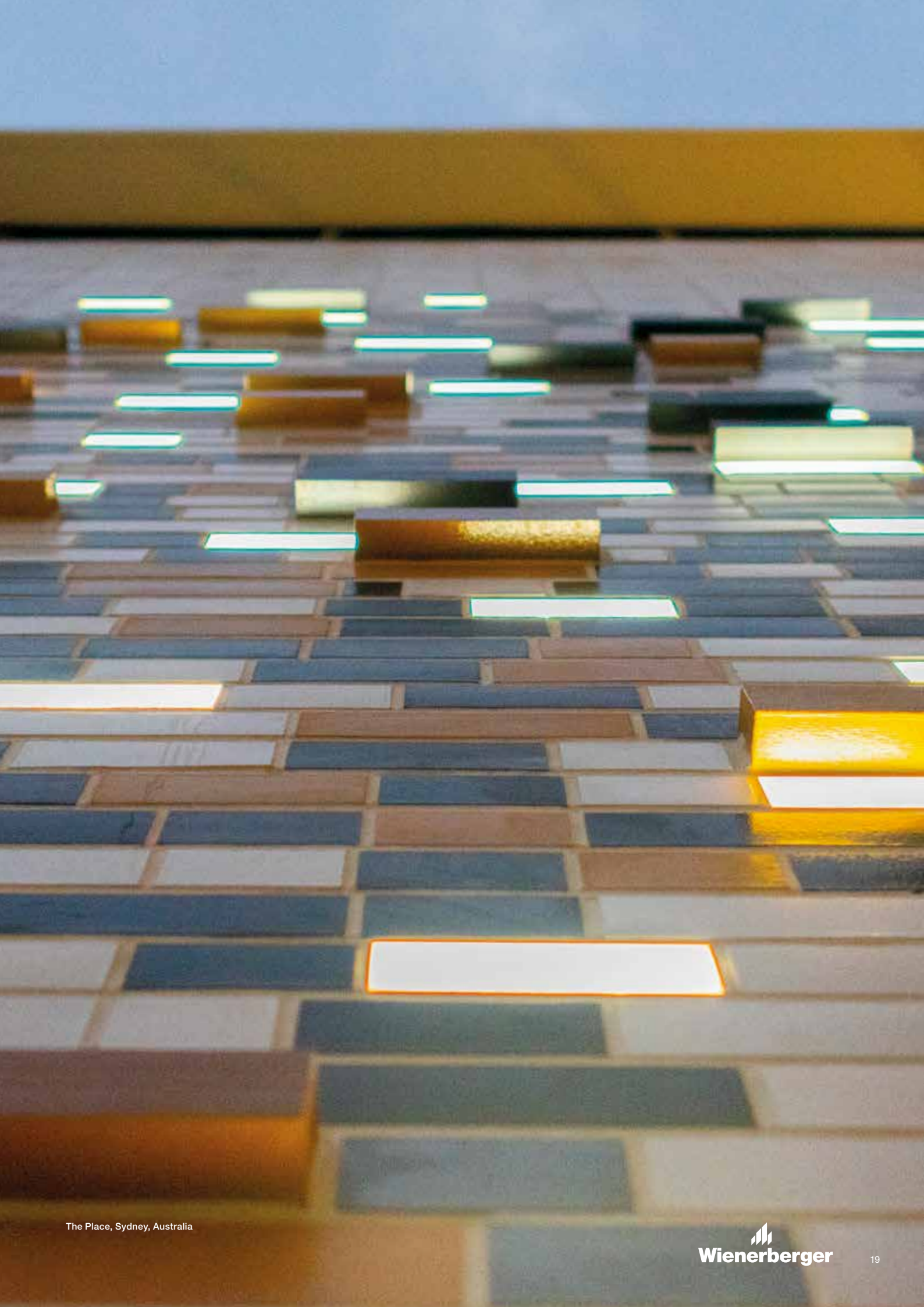
Belmont House, Uxbridge, UK



Loughborough University, UK



Rustic edges



CORIUM: CASE STUDY

South Thames College

Location

London, UK

Main contractor

United Living

Architect

Boon Brown



CORIUM: CASE STUDY

Cambridge Mosque

Location	Cambridge, UK
Main contractor	M Clarke & Sons
Architect	Marks Barfield



CORIUM: CASE STUDY

City Park West

Location	Chelmsford, UK
Main contractor	Conneely Facades
Architect	Pollard Thomas Edwards





CORIUM: CASE STUDY

Drayton Wharf, West Drayton

Location

London, UK

Main contractor

CCS Facades

Client

Howarth Homes



CORIUM: CASE STUDY

Cambridge Street

Location

Manchester, UK

Main contractor

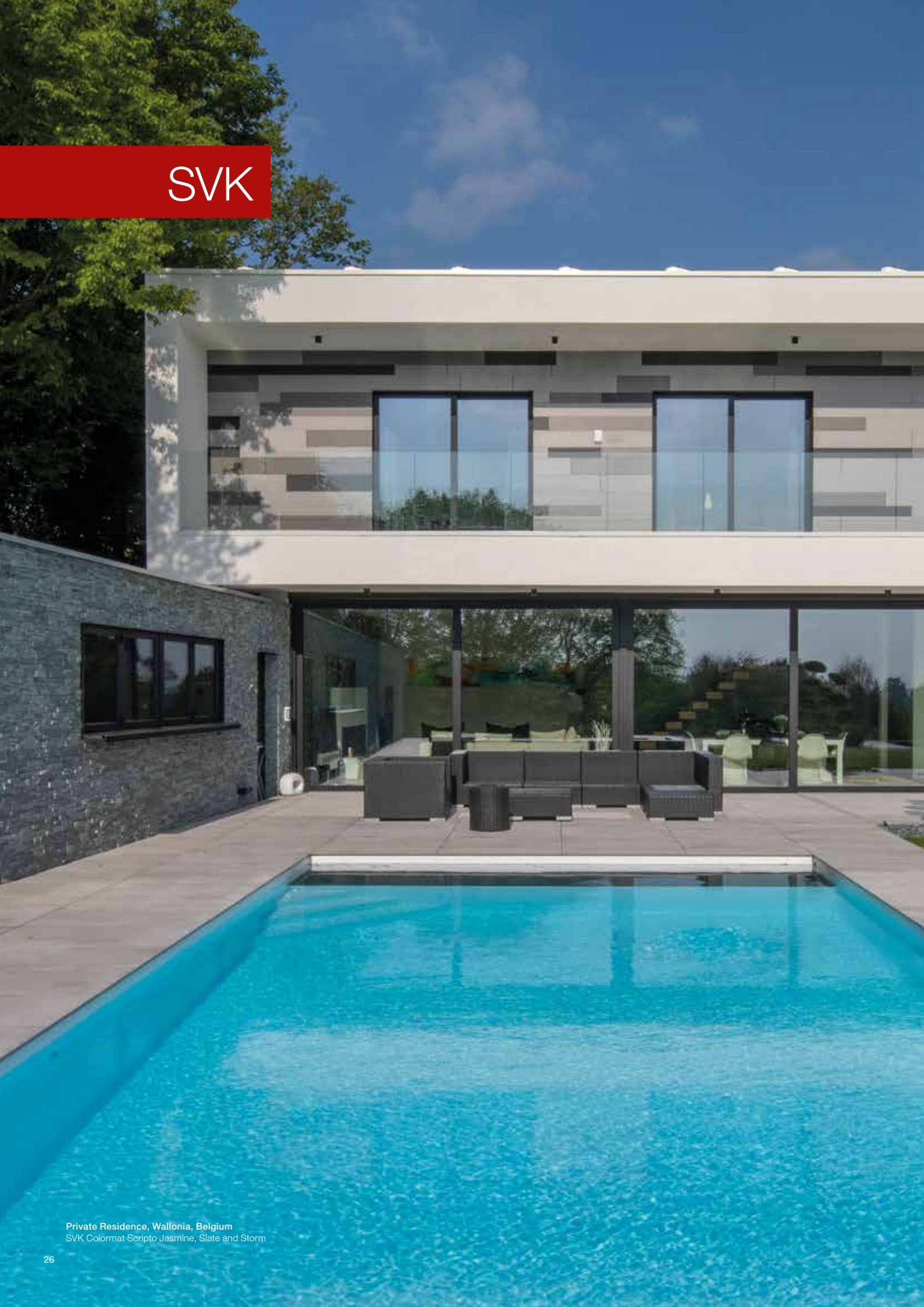
Astley Facades

Architect

Hodder & Partners



SVK



Private Residence, Wallonia, Belgium
SVK Colormat Scripto Jasmine, Slate and Storm



WHAT IS SVK?

SVK are fibre cement cladding panels designed to make contemporary facades stand out on every dimension – from cost-effectiveness and compliance to premium look and feel.

With a wide range of colours and textures available, SVK fibre cement facade panels offer the ability to create outstanding architectural cladding designs that enrich the built environment and provide A2 rated fire performance.

SVK panels achieve the perfect balance of high performance and high design, offering durability and safety at their core without sacrificing visual appeal for construction and renovation projects both large and small.

The precision-engineered cladding boards are manufactured from a mixture of Portland cement, reinforcement fibres, additives and water, which is built up in thin layers.







SVK: CERTIFICATES & STANDARDS

Lightweight solution. Heavyweight certification.

SVK is a certified, BS EN 12467-compliant and A2-rated rainscreen cladding panel range designed to give you complete peace of mind, as well as a contemporary, appealing facade.

SVK fibre cement facade panels conform to the following product safety standards and certification criteria:-

- “A2 s1, d0” fire classification in accordance with BS EN 13501-1.
- BS EN 12467 standard for “Fibre cement flat sheets – production specification and tests”.
- European Technical Assessment (ETA 14/0284).
- Independently tested to CWCT (Centre for Window and Cladding Technology) standards.
- The Decoboard Classic and Ornimat ranges also boast a 10-year colour guarantee.

Find out more about fire safety ratings: www.wienerberger.co.uk/products/facades



A2 fire rated



CWCT tested



Complies with BS EN 12467



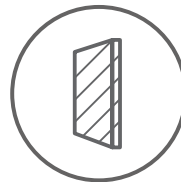
European Technical Assessment



Industry leading availability



Broad range of colours and textures



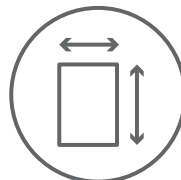
Through colour options available



Secret fixing available



Lightweight and low maintenance



Cut to size option available



10 year colour guarantee

SVK: FEATURES & BENEFITS

As a cost-effective, weather-resistant and low-maintenance facade product, SVK is proof that premium look and feel doesn't have to mean premium price.

Performance benefits of SVK fibre cement exterior wall cladding include:-

- Easy clean – simply use clean water, with added mild detergent if you wish.
- Resistant to mould, rot and bacteria.
- No risk of shrinkage or warping once installed.
- Excellent weather, fire and impact resistance.
- Lightweight ventilated rainscreen cladding solution.
- Easy to install on a wide range of substrates with a variety of fixing options available.
- Can be installed alongside other facade systems or traditional building materials.





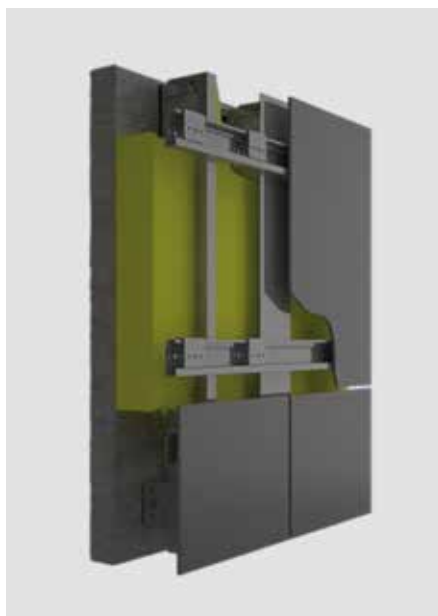


SVK: INSTALLATION

Each of these techniques guarantees a durable, high-quality result.

Fibre cement panels are typically installed as a component of a ventilated rainscreen facade system to either an aluminum or timber sub-frame. These types of build ups can accommodate large insulation thicknesses and provide all the benefits of a ventilated facades.

Find out how to install SVK here: www.wienerberger.co.uk/products/facades



Invisible Mechanical Fixing

Most SVK panels can be fixed using an invisible mechanical fixing. Anchors are attached to the rear side of predrilled SVK panels for attaching onto an aluminium supporting structure. There are no visible fixings on the front of the panel.



Screws

All SVK facade panels can be attached with screws to a timber supporting structure. For this we use facade panel screws with a colour matching screw head.

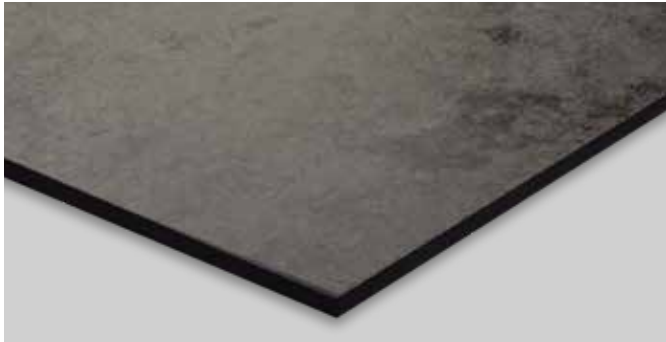


Rivets

All SVK facade panels can be attached to aluminium support structures using rivets. Colour matching rivet heads are available in the same colour as the facade panel.

SVK: THE COLLECTION

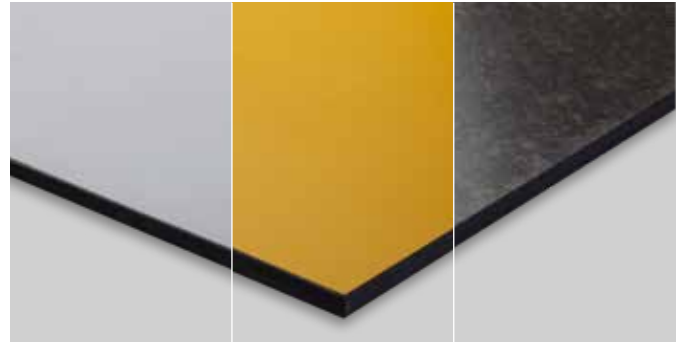
SVK fibre cement panels are available in different finishes, sizes and various complementary or contrasting colours enabling architects to realise their design ideas.



Puro Plus

Puro Plus is fibre cement panel cladding in its simplest form, offering a distinctive aesthetic choice.

Puro Plus panels let the natural beauty and texture of cement take centre stage, with no covering or coating. Lightly sanded and air-dried for a striking grey concrete effect, unique colour variations are created as the weather and environment interact with each external cladding panel over time



Decoboard

The Decoboard collection offers a contemporary finish that meets the very highest quality demands. Coated with UV resistant paints that also boast a 10 year colour guarantee.

If your project requires a broader spectrum of colour, bespoke cladding panels can be manufactured in almost any RAL or NCS colour (minimum order quantity applies).

Classic

- Decoboard Classic features a colour palette of strong greys in a smooth, matte finish.

Finished with three coats of UV-resistant acrylic paint on its face with a water-based coating protecting the rear-side. Colour matched Decoboard paint is available for painting panel edges or carrying out maintenance.

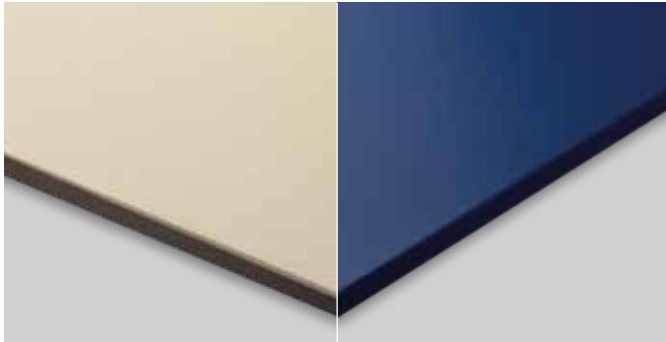
Elements

- For those looking to inject some bold colour into a facade scheme using cladding panels, the Decoboard Elements collection offers a selection of long-lasting bright tones which bring visual impact alongside high performance.

Pure

- Decoboard Pure delivers the distinctive design appeal of natural stone. Featuring a subtle, clouded stone effect in three versatile grey shades, Decoboard Pure is a coated panel with natural-looking colour variation and texture built in. This means it won't be affected by the elements over time, like the uncoated Puro Plus product.

Finished with a UV-resistant transparent or semi-transparent coating (depending on colour option chosen), this low maintenance collection benefits from a soft, glossy appearance.



Ornimat

To create a beautifully smooth, durable and easy clean finish, each Ornimat panel is coated with a high quality water-based, UV-resistant, matte polyurethane paint, machine-coloured to the face and edges for a uniform look.

Ornimat offers a premium colourfast surface treatment with a 10-year guarantee and the additional option to be painted on both sides if required.

Essentials

- Subtle neutral tones enable any building to blend into the surrounding environment, the essential range of colours offers tonal collections of ivory, seashell and stone as well as many more gentle colour variations to suit your facade project.

Elements

- The vibrant Ornimat Elements collection features fibre cement panels in bold, primary colours that can be used on their own or with other colour options to create dynamic and eye-catching facade schemes.

Bespoke

- Delivering true design flexibility, this wide range of designs doesn't finish with a portfolio of standard colours, as Ornimat fibre cement panels orders of over 50m² can be manufactured in almost any RAL or NCS colour. Colour matched Ornimat paint is available for painting panel edges or carrying out maintenance.



Colormat

Colormat through-coloured fibre cement boards combine a soft and neutral colour palette. A variety of colours and textures provide a natural finish for a modern cladding solution.

Colormat boards are fully-tinted during the manufacturing process, with pigment running throughout each panel. The finishing touch is a water-repellent, transparent protective layer for extra durability and an easy to clean finish.

Classic

- Available in a range of soft pastel and neutral tones, the lightly sanded texture and fine-lined pattern adds extra subtle detail and variation to each Colormat Classic through-coloured panel.

Scripto

- Deeply sanded with a distinct lined pattern, Colormat Scripto fibre cement boards are designed to add character and texture to building facades. A stunning effect can be created very simply by alternating the direction of the lined texture from panel to panel across a surface.

Touch

- Unlike Colormat Classic and Scripto with their lined structure, the Touch collection has a soft look and feel. Available in three neutral shades, each panel has a stippled, velvety appearance.

SVK: AT A GLANCE

Each SVK fibre cement panel collection offers a different aesthetic for your project. To help you choose which SVK product is the right one for your facade design, take a look at the technical information below.

For further support with product selection, please contact your local facade specification manager.

To view the full range please visit our website: www.wienerberger.co.uk/products/facades

PURO PLUS		DECOBOARD		
Finish	Grey panel with natural effect Untreated lightly sanded surface	Classic	Elements	Pure
		High UV resistance Can be sawn to size in advance Colour paint pot available for maintenance		
Dimensions	Squared standard 3,070 x 1,220 mm 2,520 x 1,220 mm Non-squared standard 3,085 x 1,235 mm 2,535 x 1,235 mm	3 standard colours with a natural stone look Transparent and semi-transparent coating		
Reaction to fire classification in accordance with BS EN 13501-1	A2-s1, d0	A2-s1, d0		
Thickness	8 mm and 10 mm (12 mm on request)	8 mm and 10 mm (12 mm on request)		
Weight	± 14.60 kg/m ²	± 14.60 kg/m ²		
Screws	YES	YES		
Rivets	YES	YES		
Invisible Mechanical Fastening	YES	YES		

ORNIMAT		COLORMAT		
Elements	Essentials	Classic	Scripto	Touch
High-quality UV-resistant coating Sawn to size in advance Coated in one colour Edges coated in same colour		Waterproofed: water-repellent, transparent protective layer Through coloured		
		Lightly sanded line pattern	Deeply sanded line pattern	Stippled, velvety appearance
Squared Length (cut to size) Width (cut to size) max. dimensions 3,070 x 1,220 mm		Squared 3,050 x 1,220 mm 2,500 x 1,220 mm		
A2-s1, d0		A2-s1, d0		
8 mm and 10 mm (12 mm on request)		8 mm		
± 14.60 kg/m ²		± 14.40 kg/m ²		
YES		YES		
YES		YES		
YES		NO		

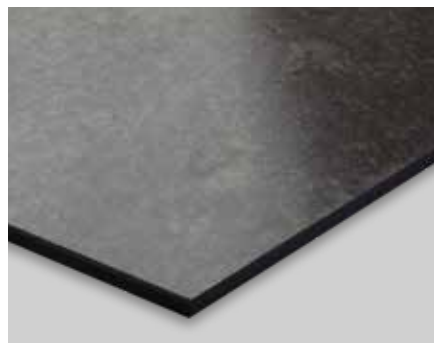
SVK: COLOURS

Natural stone / concrete effects

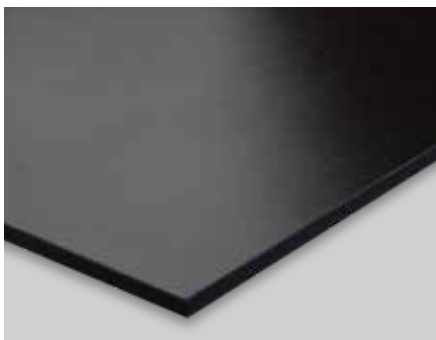
To view the full range please visit our website: www.wienerberger.co.uk/products/facades



PURO PLUS NATURAL GREY



DECOBOARD PURE GALE



DECOBOARD PURE THUNDER



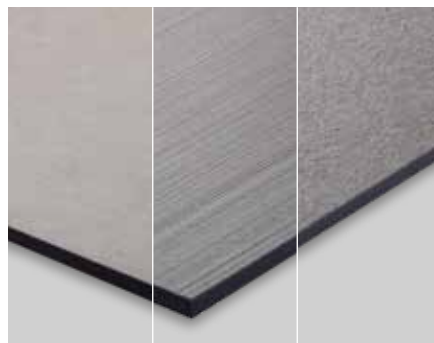
DECOBOARD PURE BURST

Neutrals

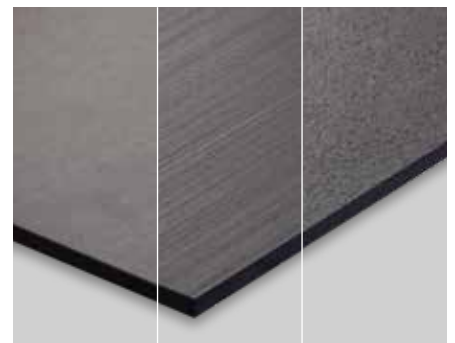
To view the full range please visit our website: www.wienerberger.co.uk/products/facades



COLORMAT NATURAL
Classic / Scripto / Touch



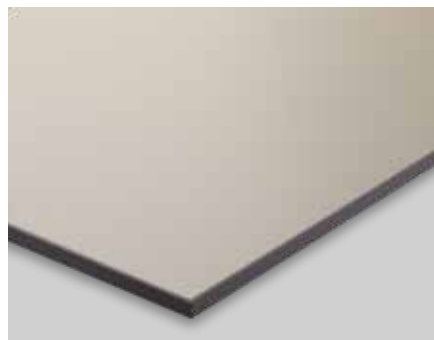
COLORMAT STORM
Classic / Scripto / Touch



COLORMAT SLATE
Classic / Scripto / Touch



COLORMAT EARTH
Classic / Scripto

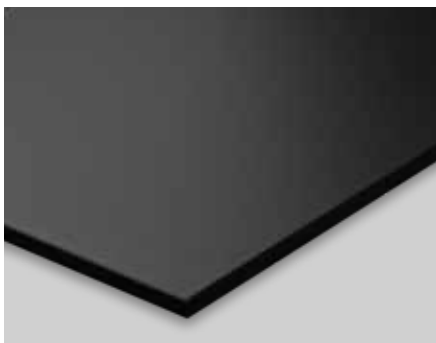


ORNIMAT CREAM

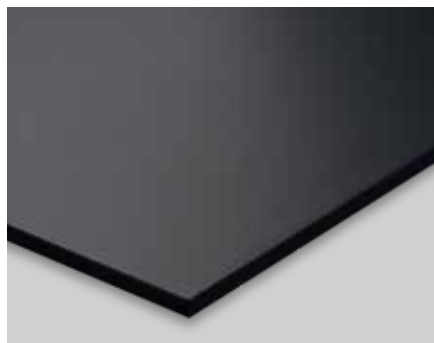
SVK: COLOURS

Greys

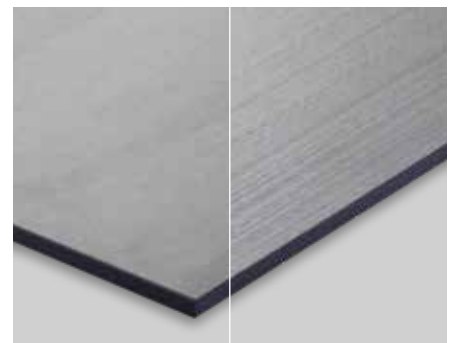
To view the full range please visit our website: www.wienerberger.co.uk/products/facades



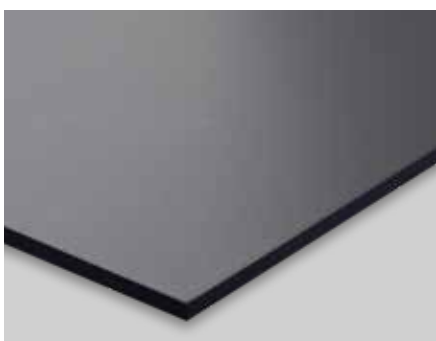
ORNIMAT CARBON



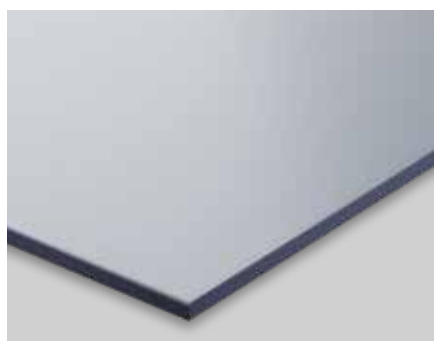
ORNIMAT JET



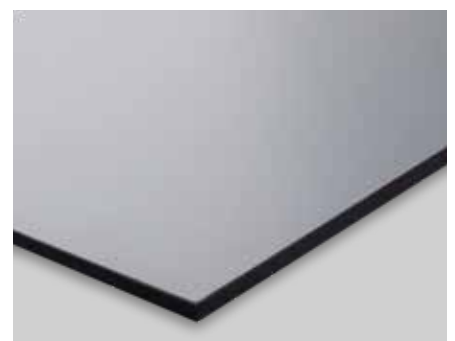
COLOMAT PEARL
Classic / Scripto



ORNIMAT STONE



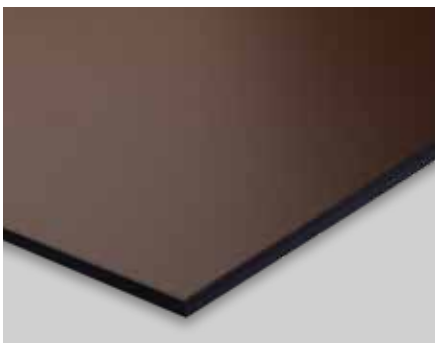
ORNIMAT STEEL



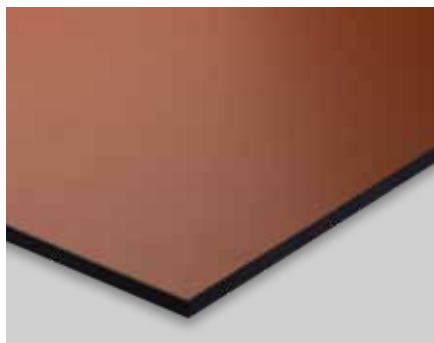
DECOBOARD MID GREY

Earth tones

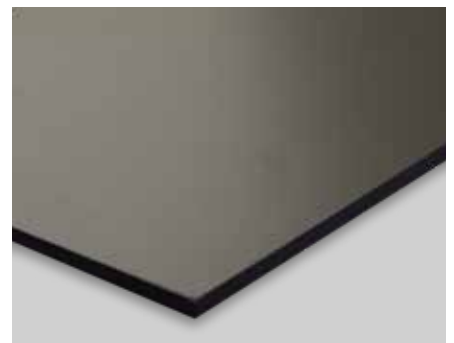
To view the full range please visit our website: www.wienerberger.co.uk/products/facades



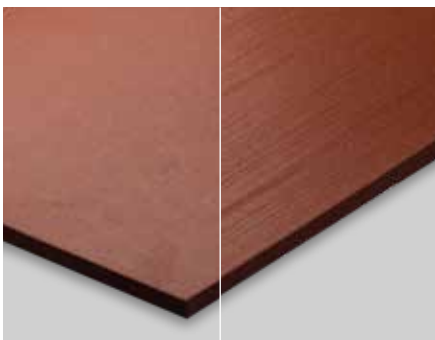
DECObOARD CLASSIC WOOD



DECObOARD CLASSIC COPPER RED



DECObOARD CLASSIC QUARTZ GREY



COLORMAT RASPBERRY
Classic / Scripto

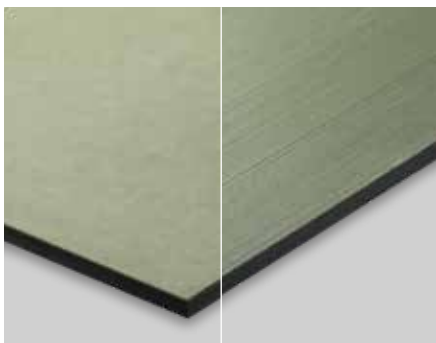


COLORMAT CHESTNUT
Classic / Scripto

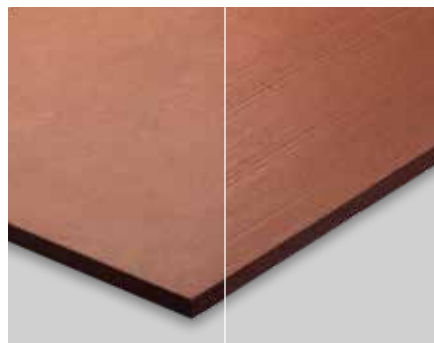
SVK: COLOURS

Pastels

To view the full range please visit our website: www.wienerberger.co.uk/products/facades



COLORMAT DAYBREAK
Classic / Scripto



COLORMAT SUNSET
Classic / Scripto



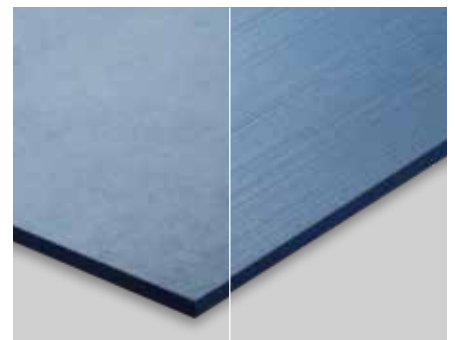
COLORMAT CHAMPAGNE
Classic / Scripto



ORNIMAT IVORY



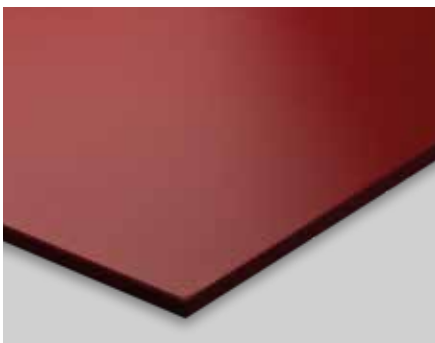
COLORMAT CAMEL
Classic / Scripto



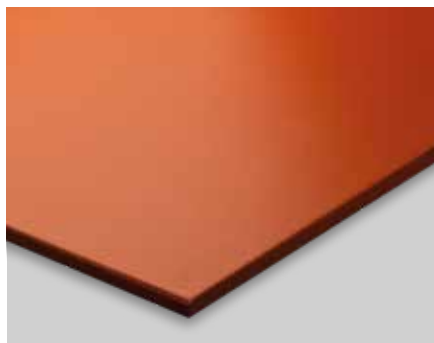
COLORMAT CARIBBEAN
Classic / Scripto

Brights

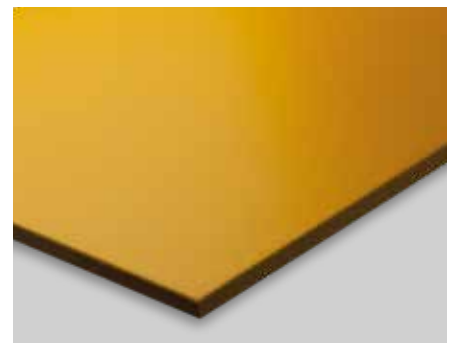
To view the full range please visit our website: www.wienerberger.co.uk/products/facades



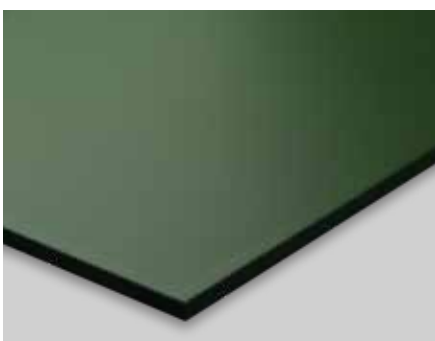
ORNIMAT FIRE



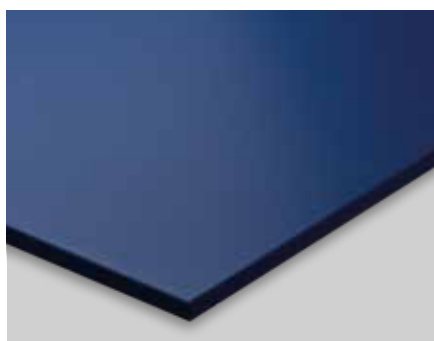
ORNIMAT SUNRISE



ORNIMAT SAND



ORNIMAT FOREST

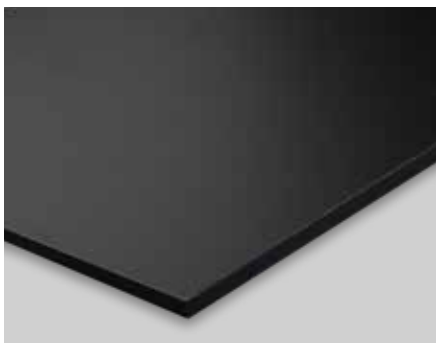


ORNIMAT WATER

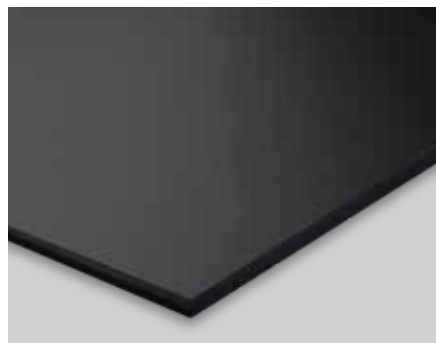
SVK: COLOURS

Black and white

To view the full range please visit our website: www.wienerberger.co.uk/products/facades



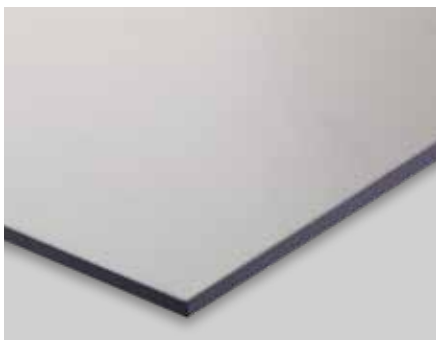
DECOBOARD CLASSIC BLACK



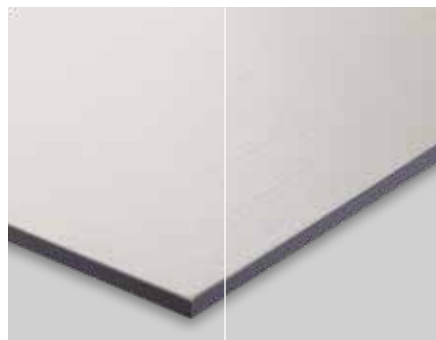
DECOBOARD CLASSIC BLACK GREY



DECOBOARD CLASSIC WHITE



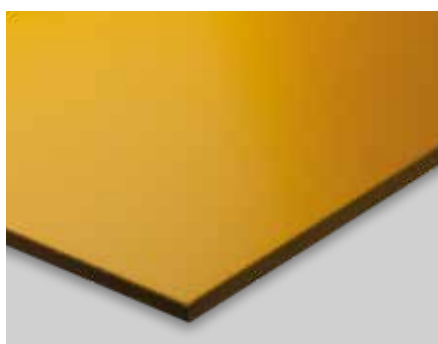
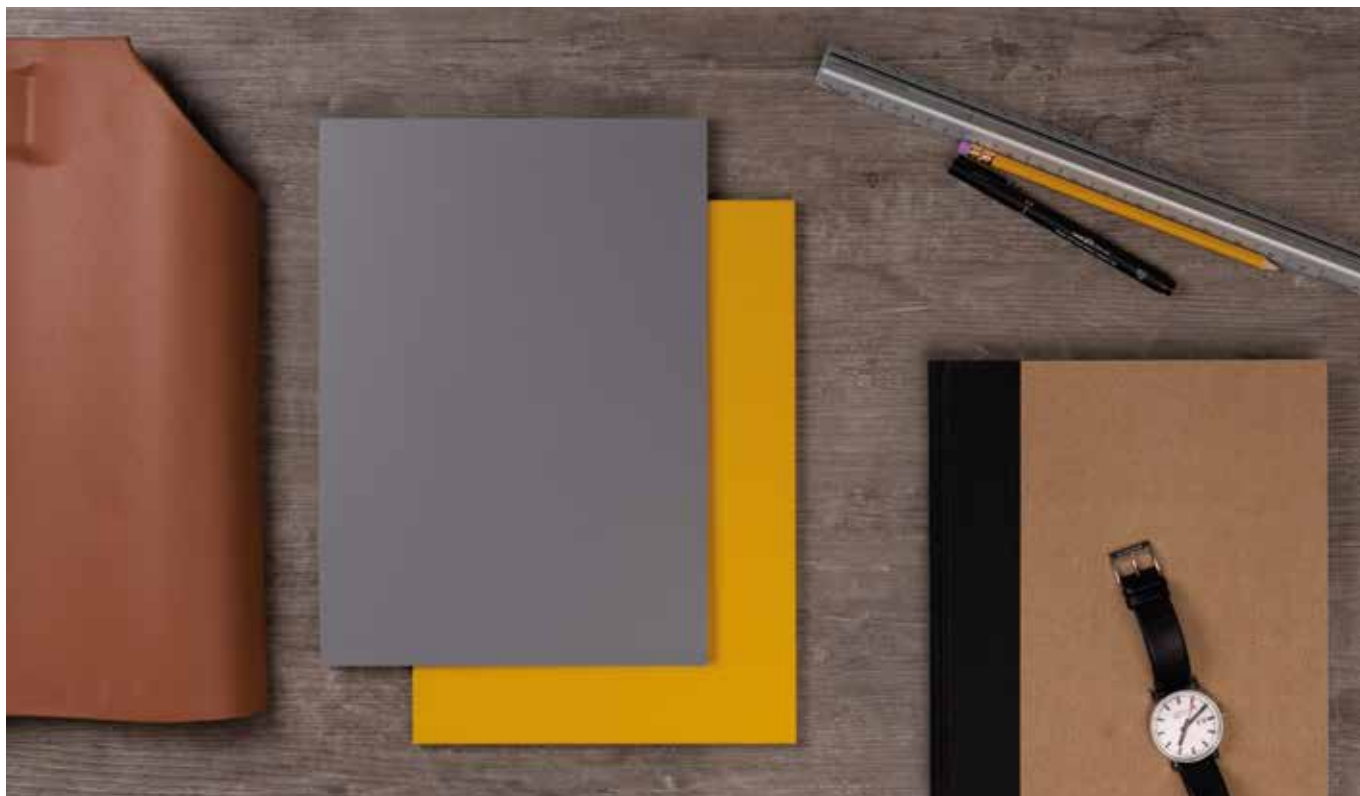
ORNIMAT SEASHELL



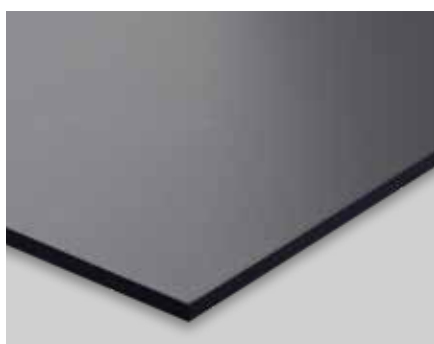
COLORMAT JASMINE
Classic / Scripto

Pantone® Colour of the Year

To view the full range please visit our website: www.wienerberger.co.uk/products/facades



ORNIMAT SAND



ORNIMAT STONE

SVK: CASE STUDY

Kanaleneiland, Utrecht

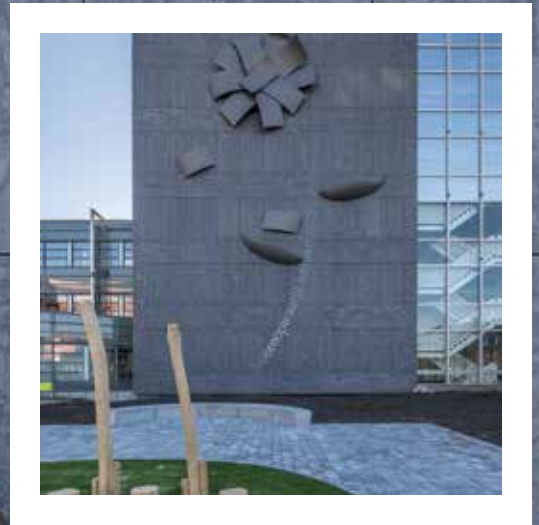
Location	Utrecht, The Netherlands
Project type	Residential
Architect	Bosch de Vroom Schuurmans Associates
Product	Ornimat
Colour	Fire, Sunrise, Sand



SVK: CASE STUDY

Westfriesgasthuis Hospital, Hoon

Location	Hoon, The Netherlands
Project type	Public
Architect	Architectenbureau de Jong Gortemaker Algra
Product	Puro Plus
Colour	Natural Grey
Flower artwork	Coated stainless steel

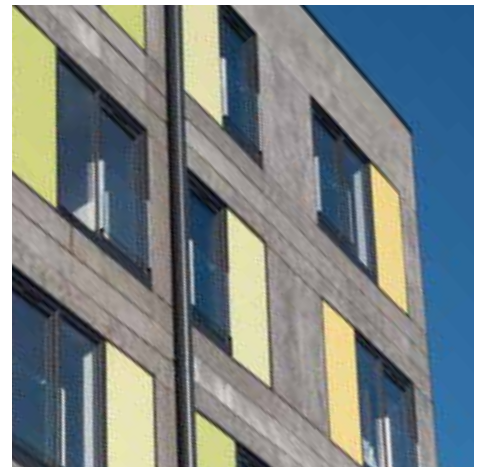


tot bloei

SVK: CASE STUDY

Victoria Court, Birmingham

Location	Birmingham, UK
Project type	Residential re-clad
Architect	Detail DMC
Product	Puro Plus
Colour	Natural Grey



SVK: CASE STUDY

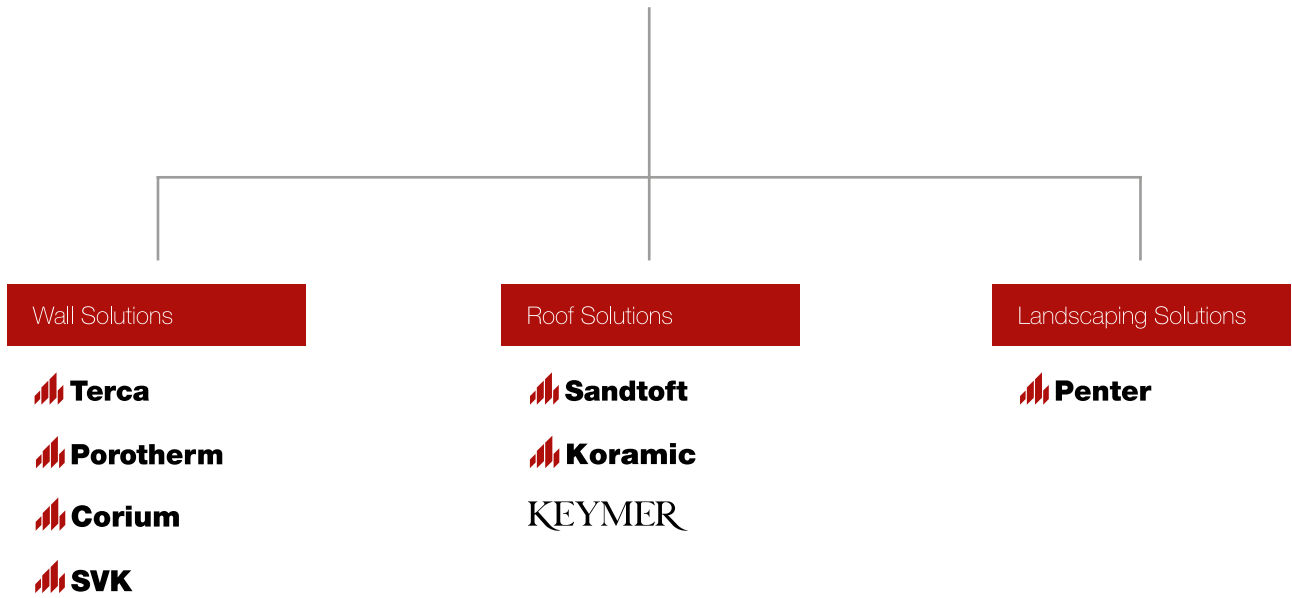
Apartment Complex , Amstelveen

Location	Amstelveen, The Netherlands
Project type	Residential
Architect	Hoogeveen Architects
Product	Colormat Scripto
Colour	Slate





Wienerberger



Wienerberger Ltd
Wienerberger House
Brooks Drive
Cheadle Royal Business Park
Cheadle, Cheshire
SK8 3SA

☎ 0161 491 8200

✉ wbukmarketing@wienerberger.com

🐦 [@wienerbergeruk](https://twitter.com/wienerbergeruk)

🌐 www.wienerberger.co.uk

