

CORIUM DISCLAIMER

The designs and/or information in respect of the Corium brick cladding system (the "Corium Information") are provided to you for general information purposes only and to demonstrate an example use of the Corium brick cladding system.

The Corium Information is subject to change without notice and whilst it has been prepared with reasonable precaution and in good faith, no representation, warranty, assurance or undertaking (express or implied) is or will be made, and no responsibility or liability is or will be accepted, by Wienerberger in relation to the adequacy, accuracy, reasonableness or completeness of the Corium Information or the use (or incorrect use) of the Corium Information. All and any such responsibility and liability (whether in contract, tort (including negligence), misrepresentation, under any statute or otherwise) is expressly excluded.

Use of and reliance on the Corium Information is at your own risk. Wienerberger is not responsible for any reliance or actions taken based on the Corium Information.



Nothing contained in the Corium Information should be relied upon as a guarantee of the performance of or otherwise the viability of the Corium brick cladding system. Wienerberger is not responsible for any designs or projects which incorporate the Corium Information or the Corium brick cladding system, which should be carried out by an appropriately qualified and professional architect or structural engineer. All design and installation in respect of the Corium brick cladding system should be carried out in accordance with applicable law, British and European Standards, Codes of Practice, Building Regulations and ancillary component manufacturers' guidance. All warranties, conditions and other terms implied by law, including the implied conditions of satisfactory quality and fitness for purpose in relation to the Corium brick cladding system, are excluded.

Nothing in the Corium Information is intended to constitute an offer or invitation. The provision of the Corium Information to you is subject to contract and shall in no way create any contractual relationship with Wienerberger.

Wienerberger owes no duty of care and excludes all liability in respect of the Corium Information, provided that nothing in this disclaimer shall exclude or limit Wienerberger's liability for death or personal injury caused by its negligence, fraud or fraudulent misrepresentation.

DRAWING NUMBER	REV	DRAWING TITLE	SCALE
WBR-CM-SFS-50-S01	-	Typical Wall Build Up with 50mm Brick Tiles	1:5 @ A4
WBR-CM-SFS-140-S01	-	Typical Wall Build Up with 140mm Brick Tiles	1:5 @ A4
WBR-CM-SFS-215-S01	-	Typical Wall Build Up with 215mm Brick Tiles	1:5 @ A4

rev: date: comment(s): name: check:

				
title: Title Sheet Alternative Tile Sizes				
drg No: WBR-CM-SFS-003				
drawn:	check:	date:	scale:	rev:
JG	MF	22/06/21	1:5 @ A4	-
				
Wienerberger Ltd Wienerberger House, Brooks Drive, Cheadle Royal Business Park, Cheadle, Cheshire, SK8 3SA T: +44 (0) 161 491 8200 E: design.uk@wienerberger.com				

Wienerberger Corium fired clay extruded brick tiles with visible face dimensions of 50x215mm (32mm thick). Other lengths available up to 327mm.

Corium interlocking steel rails mechanically fixed to the supporting subframe. Rails available in 0.55mm thick stainless steel (grades 304 and 316) or 0.7mm thick Magnelis metallic coated steel (ZM310 and ZM430).

Sika Parex Historic KL mortar to be flush or slightly bucket-handled. Pointing and mortar mixing must only be carried out by approved Corium installers.

Corium rail fixings to be austenitic stainless steel fasteners with integral sealing washer (EPDM or similar). Refer to fixing pattern drawing WBR-CM-FX01.

Aluminium sub-frame consisting of L and T shaped vertical profiles fixed back to helping hand support brackets. Use a thermal break to minimize thermal bridges at the support bracket and substrate abutment. Always use a system that was developed for façade cladding. System to be to specialist design.

Double aluminium support bracket.

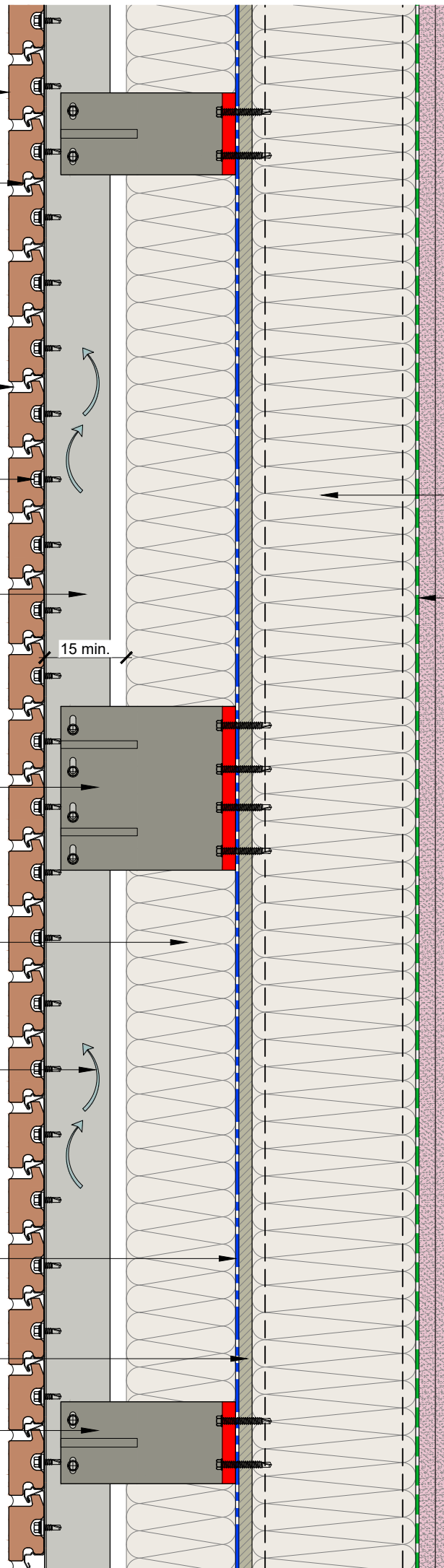
Insulation to project specific details. Moisture resistance, sound insulation, reaction to fire and UV-resistance properties all to be considered by the project Architect.

In order to achieve adequate ventilation a minimum 15mm continuous cavity between the back of the Corium interlocking rails and the face of the insulation is required. It is important that the cavity is not interrupted and that air entry and exit points are provided at the top and the bottom of the facade as well as every facade aperture to ensure sufficient air circulation.

Breather membrane applied to face of cement particle board ensuring overlaps and connections are carried out to manufacturers instructions.

Cement particle board fixed back to SFS.

Single aluminium support bracket.



SFS with insulation between studs to project Architect specification and details.

Vapour control layer installed to manufacturers instructions.

Typical internal finish comprising of two layers of 15mm plasterboard with plaster skim finish.

rev: date: comment(s): name: check:

				
title: Typical Wall Build Up with 50mm Brick Tiles				
drg No: WBR-CM-SFS-50-S01				
drawn: JG	check: MF	date: 22/06/21	scale: 1:5 @ A4	rev: -
				
<p>Wienerberger Ltd Wienerberger House, Brooks Drive, Cheadle Royal Business Park, Cheadle, Cheshire, SK8 3SA</p> <p>T: +44 (0) 161 491 8200 E: design.uk@wienerberger.com</p>				

Wienerberger Corium fired clay extruded brick tiles with visible face dimensions of 140x215mm (32mm thick). Other lengths available up to 327mm.

Sika Parex Historic KL mortar to be flush or slightly bucket-handled. Pointing and mortar mixing must only be carried out by approved Corium installers.

Corium interlocking steel rails mechanically fixed to the supporting subframe. Rails available in 0.55mm thick stainless steel (grades 304 and 316) or 0.7mm thick Magnelis metallic coated steel (ZM310 and ZM430).

Corium rail fixings to be austenitic stainless steel fasteners with integral sealing washer (EPDM or similar). Refer to fixing pattern drawing WBR-CM-FX01.

Aluminium sub-frame consisting of L and T shaped vertical profiles fixed back to helping hand support brackets. Use a thermal break to minimize thermal bridges at the support bracket and substrate abutment. Always use a system that was developed for façade cladding. System to be to specialist design.

Double aluminium support bracket.

Insulation to project specific details. Moisture resistance, sound insulation, reaction to fire and UV-resistance properties all to be considered by the project Architect.

In order to achieve adequate ventilation a minimum 15mm continuous cavity between the back of the Corium interlocking rails and the face of the insulation is required. It is important that the cavity is not interrupted and that air entry and exit points are provided at the top and the bottom of the facade as well as every facade aperture to ensure sufficient air circulation.

Breather membrane applied to face of cement particle board ensuring overlaps and connections are carried out to manufacturers instructions.

Cement particle board fixed back to SFS.

Single aluminium support bracket.

15 min.

SFS with insulation between studs to project Architect specification and details.

Vapour control layer installed to manufacturers instructions.

Typical internal finish comprising of two layers of 15mm plasterboard with plaster skim finish.

rev: date: comment(s): name: check:

				
title: Typical Wall Build Up with 140mm Brick Tiles				
drg No: WBR-CM-SFS-140-S01				
drawn: JG	check: MF	date: 22/06/21	scale: 1:5 @ A4	rev: -
				
Wienerberger Ltd Wienerberger House, Brooks Drive, Cheadle Royal Business Park, Cheadle, Cheshire, SK8 3SA T: +44 (0) 161 491 8200 E: design.uk@wienerberger.com				

Corium rail fixings to be austenitic stainless steel fasteners with integral sealing washer (EPDM or similar). Refer to fixing pattern drawing WBR-CM-FX01.

Large format Wienerberger Corium fired clay extruded brick tiles with visible face dimensions of 215x327mm (32mm thick). Other lengths available.

Sika Parex Historic KL mortar to be flush or slightly bucket-handled. Pointing and mortar mixing must only be carried out by approved Corium installers.

Corium interlocking steel rails mechanically fixed to the supporting subframe. Rails available in 0.55mm thick stainless steel (grades 304 and 316) or 0.7mm thick Magnelis metallic coated steel (ZM310 and ZM430).

Aluminium sub-frame consisting of L and T shaped vertical profiles fixed back to helping hand support brackets. Use a thermal break to minimize thermal bridges at the support bracket and substrate abutment. Always use a system that was developed for façade cladding. System to be to specialist design.

Double aluminium support bracket.

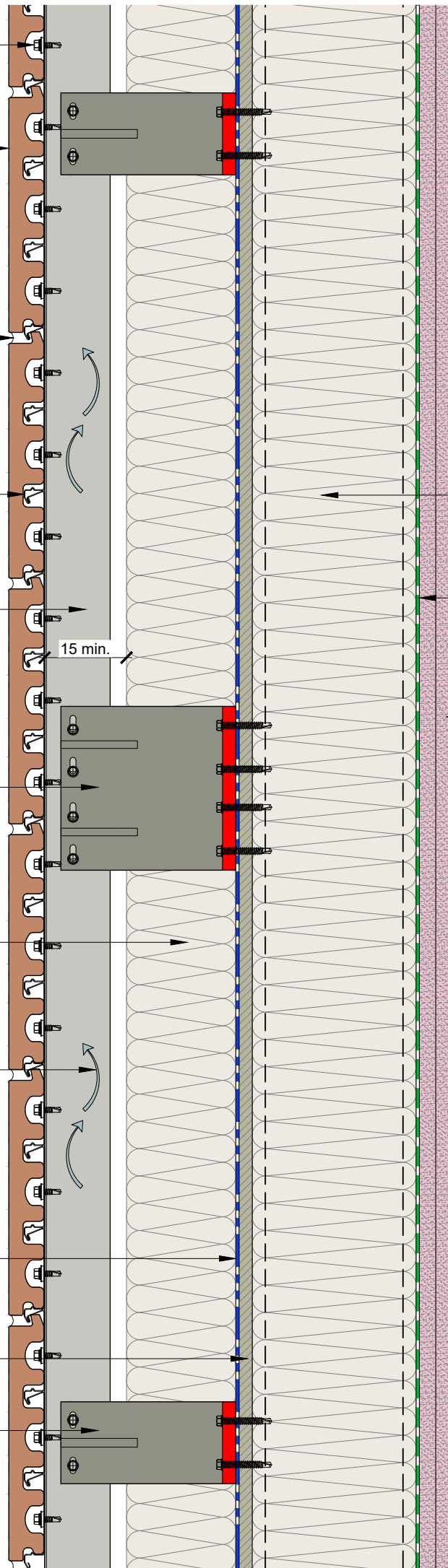
Insulation to project specific details. Moisture resistance, sound insulation, reaction to fire and UV-resistance properties all to be considered by the project Architect.

In order to achieve adequate ventilation a minimum 15mm continuous cavity between the back of the Corium interlocking rails and the face of the insulation is required. It is important that the cavity is not interrupted and that air entry and exit points are provided at the top and the bottom of the facade as well as every facade aperture to ensure sufficient air circulation.

Breather membrane applied to face of cement particle board ensuring overlaps and connections are carried out to manufacturers instructions.

Cement particle board fixed back to SFS.

Single aluminium support bracket.



SFS with full fill insulation between studs.

Vapour control layer installed to manufacturers instructions.

Typical internal finish comprising of two layers of 15mm plasterboard on 10mm dabs with plaster skim finish.

rev: date: comment(s): name: check:

title: Typical Wall Build Up with 215mm Brick Tiles				
drg No: WBR-CM-SFS-215-S01				
drawn:	check:	date:	scale:	rev:
JG	MF	22/06/21	1:5 @ A4	-
Wienerberger Ltd Wienerberger House, Brooks Drive, Cheadle Royal Business Park, Cheadle, Cheshire, SK8 3SA T: +44 (0) 161 491 8200 E: design.uk@wienerberger.com				