

SVK DISCLAIMER

The designs and/or information in respect of the SVK fibre cement facade panels (the "SVK Information") are provided to you for general information purposes only and to demonstrate an example use of the SVK fibre cement facade panels.

The SVK Information is subject to change without notice and whilst it has been prepared with reasonable precaution and in good faith, no representation, warranty, assurance or undertaking (express or implied) is or will be made, and no responsibility or liability is or will be accepted, by Wienerberger in relation to the adequacy, accuracy, reasonableness or completeness of the SVK Information or the use (or incorrect use) of the SVK Information. All and any such responsibility and liability (whether in contract, tort (including negligence), misrepresentation, under any statute or otherwise) is expressly excluded.

Use of and reliance on the SVK Information is at your own risk. Wienerberger is not responsible for any reliance or actions taken based on the SVK Information.

Nothing contained in the SVK Information should be relied upon as a guarantee of the performance of or otherwise the viability of the SVK fibre cement facade panels. Wienerberger is not responsible for any designs or projects which incorporate the SVK Information or the SVK fibre cement facade panels, which should be carried out by an appropriately qualified and professional architect or structural engineer. All design and installation in respect of the SVK fibre cement facade panels should be carried out in accordance with applicable law, British and European Standards, Codes of Practice, Building Regulations and ancillary component manufacturers' guidance. All warranties, conditions and other terms implied by law, including the implied conditions of satisfactory quality and fitness for purpose in relation to the SVK fibre cement facade panels, are excluded.

Nothing in the SVK Information is intended to constitute an offer or invitation. The provision of the SVK Information to you is subject to contract and shall in no way create any contractual relationship with Wienerberger.

Wienerberger owes no duty of care and excludes all liability in respect of the SVK Information, provided that nothing in this disclaimer shall exclude or limit Wienerberger's liability for death or personal injury caused by its negligence, fraud or fraudulent misrepresentation.

DRAWING NUMBER	REV	DRAWING TITLE	SCALE
WBR-SVK-002	-	Title Sheet - SVK Secret Fixing	1:5 @ A4
WBR-SVK-B01	-	Horizontal Joint (Secret Fixing)	1:5 @ A4
WBR-SVK-B02	-	Horizontal Movement Joint (Secret Fixing)	1:5 @ A4
WBR-SVK-B03	-	Window Cill Detail (Secret Fixing)	1:5 @ A4
WBR-SVK-B04	-	Window Head Detail (Secret Fixing)	1:5 @ A4
WBR-SVK-B05	-	Ground Floor Slab (Secret Fixing)	1:5 @ A4
WBR-SVK-B06	-	Parapet Detail (Secret Fixing)	1:5 @ A4
WBR-SVK-B07	-	Vertical Joint (Secret Fixing)	1:5 @ A4
WBR-SVK-B08	-	Window Jamb Detail (Secret Fixing)	1:5 @ A4
WBR-SVK-B09	-	Internal Corner Detail (Secret Fixing)	1:5 @ A4
WBR-SVK-B10	-	External Corner Detail (Secret Fixing)	1:5 @ A4

rev: date: comment(s): name: check:

				
title: Title Sheet SVK Secret Fixing				
drg No: WBR-SVK-002				
drawn: JG	check: XX	date: 06/05/21	scale: 1:5 @ A4	rev: -
				
Wienerberger Ltd Wienerberger House, Brooks Drive, Cheadle Royal Business Park, Cheadle, Cheshire, SK8 3SA T: +44 (0) 161 491 8200 E: design.uk@wienerberger.com				

Double aluminium helping hand support bracket. Use a thermal break to minimize thermal bridges at the support bracket and substrate abutment. Always use a system that was developed for façade cladding.

Aluminium sub-frame consisting of L & T shaped vertical profiles fixed back to helping hand support brackets, fixed to provide the minimum recommended cavity of 50mm

In order to achieve adequate ventilation a 50mm continuous cavity between the back of the SVK panels and the surface of the insulation is required. It is important that the cavity is not interrupted and that air entry and exit points are provided at the top and the bottom of the facade as well as every facade aperture to ensure a sufficient air circulation

Open joint width of 10mm min. in order to compensate for the movement of the panels and execution tolerances.

Panel hanger

Undercut anchor

Horizontal rail

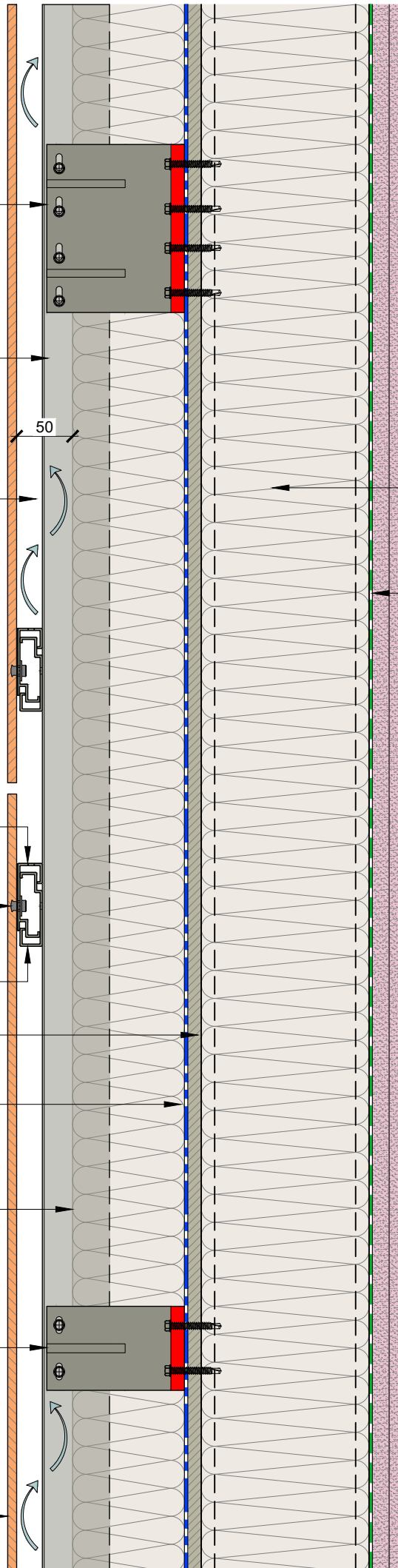
Cement particle board fixed back to SFS studs.

Breather membrane applied to face of cement particle board ensuring overlaps and connections are carried out to manufactures instructions.

Insulation to project specific details. Moisture resistance, sound insulation, reaction to fire and UV-resistance properties all to be considered by the project Architect.

Single aluminium helping hand support bracket. Use a thermal break to minimize thermal bridges at the support bracket and substrate abutment. Always use a system that was developed for façade cladding.

Wienerberger SVK 8mm fibre cement panel.



SFS with full fill insulation between studs.

Vapour control layer installed to manufactures instructions.

Typical internal finish comprising of two layers of 15mm plasterboard on 10mm dabs with plaster skim finish.

rev: date: comment(s): name: check:

title: Horizontal Joint (Secret Fixing)				
drg No: WBR-SVK-B01				
drawn:	check:	date:	scale:	rev:
JG	XX	06/05/21	1:5 @ A4	-
Wienerberger Ltd Wienerberger House, Brooks Drive, Cheadle Royal Business Park, Cheadle, Cheshire, SK8 3SA T: +44 (0) 161 491 8200 E: design.uk@wienerberger.com				

Double aluminium helping hand support bracket. Use a thermal break to minimize thermal bridges at the support bracket and substrate abutment. Always use a system that was developed for façade cladding.

Aluminium sub-frame consisting of L & T shaped vertical profiles fixed back to helping hand support brackets, fixed to provide the minimum recommended cavity of 50mm

In order to achieve adequate ventilation a 50mm continuous cavity between the back of the SVK panels and the surface of the insulation is required. It is important that the cavity is not interrupted and that air entry and exit points are provided at the top and the bottom of the facade as well as every facade aperture to ensure a sufficient air circulation

Minimum 10mm movement joint between vertical fixing profiles.

Open joint width of 10mm min. in order to compensate for the movement of the panels and execution tolerances.

Panel hanger

Undercut anchor

Horizontal rail

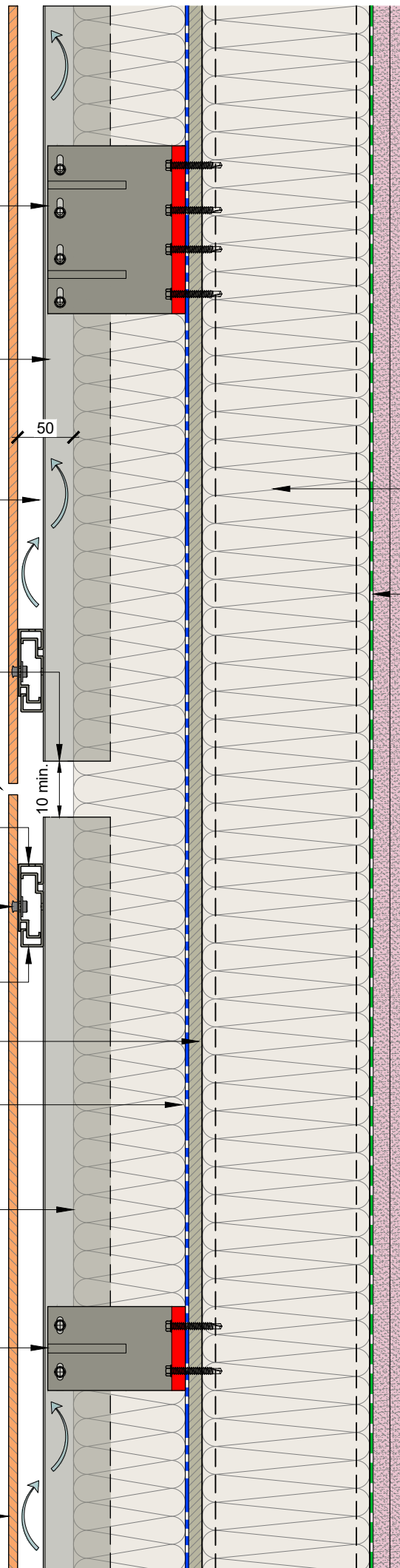
Cement particle board fixed back to SFS studs.

Breather membrane applied to face of cement particle board ensuring overlaps and connections are carried out to manufactures instructions.

Insulation to project specific details. Moisture resistance, sound insulation, reaction to fire and UV-resistance properties all to be considered by the project Architect.

Single aluminium helping hand support bracket. Use a thermal break to minimize thermal bridges at the support bracket and substrate abutment. Always use a system that was developed for façade cladding.

Wienerberger SVK 8mm fibre cement panel.



SFS with full fill insulation between studs.

Vapour control layer installed to manufactures instructions.

Typical internal finish comprising of two layers of 15mm plasterboard on 10mm dabs with plaster skim finish.

rev: date: comment(s): name: check:



title:
Horizontal Movement Joint
(Secret Fixing)

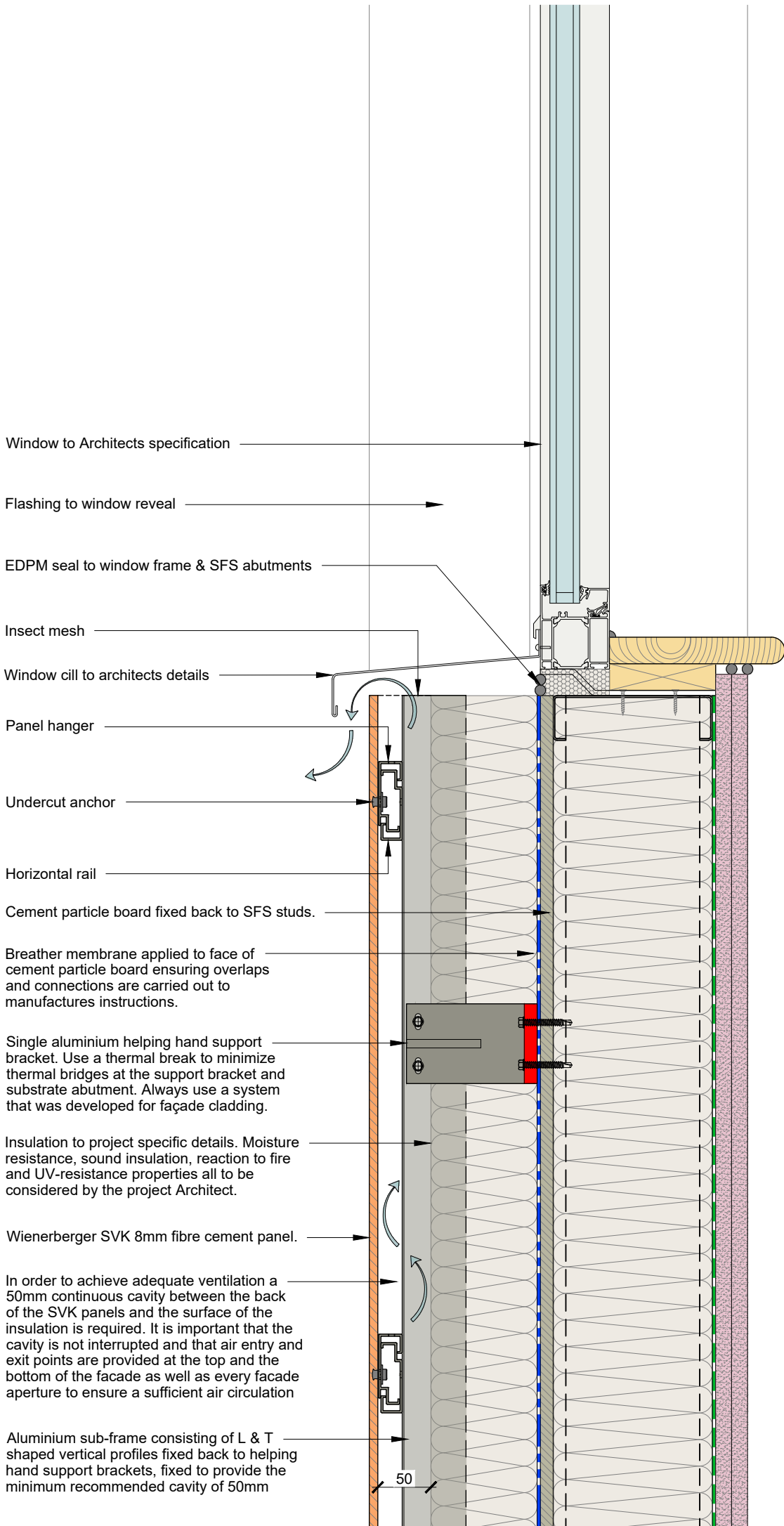
drg No:
WBR-SVK-B02

drawn:	check:	date:	scale:	rev:
JG	XX	06/05/21	1:5 @ A4	-



wienerberger house, brooks drive,
Cheadle Royal Business Park,
Cheadle, Cheshire, SK8 3SA

T: +44 (0) 161 491 8200
E: design.uk@wienerberger.com



rev: date: comment(s): name: check:

title: Window Cill Detail (Secret Fixing)				
drg No: WBR-SVK-B03				
drawn: JG	check: XX	date: 06/05/21	scale: 1:5 @ A4	rev: -
<small>wienerberger house, brooks drive, Cheadle Royal Business Park, Cheadle, Cheshire, SK8 3SA</small> <small>T: +44 (0) 161 491 8200 E: design.uk@wienerberger.com</small>				

Aluminium sub-frame consisting of L & T shaped vertical profiles fixed back to helping hand support brackets, fixed to provide the minimum recommended cavity of 50mm

In order to achieve adequate ventilation a 50mm continuous cavity between the back of the SVK panels and the surface of the insulation is required. It is important that the cavity is not interrupted and that air entry and exit points are provided at the top and the bottom of the facade as well as every facade aperture to ensure a sufficient air circulation

Cement particle board fixed back to SFS studs.

Breather membrane applied to face of cement particle board ensuring overlaps and connections are carried out to manufactures instructions.

Single aluminium helping hand support bracket. Use a thermal break to minimize thermal bridges at the support bracket and substrate abutment. Always use a system that was developed for façade cladding.

Insulation to project specific details. Moisture resistance, sound insulation, reaction to fire and UV-resistance properties all to be considered by the project Architect.

Panel hanger

Wienerberger SVK 8mm fibre cement panel.

Undercut anchor

Horizontal rail

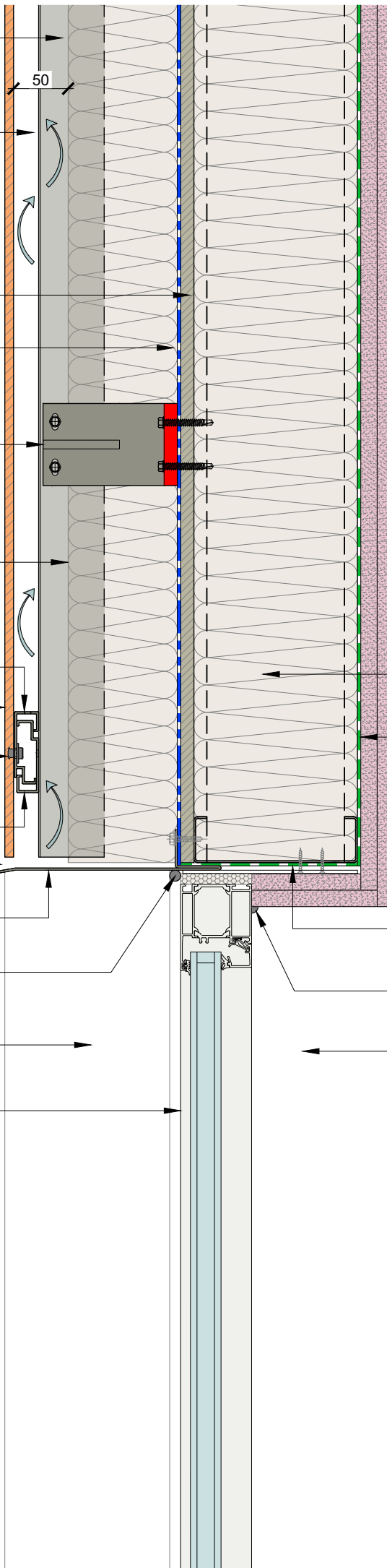
10mm min. open joint

Flashing to window head

EDPM seal to window frame & SFS abutments

Flashing to window reveal

Window to Architects specification



SFS with full fill insulation between studs.

Vapour control layer installed to manufactures instructions.


Typical internal finish comprising of two layers of 15mm plasterboard on 10mm dabs with plaster skim finish.

Window fixing strap fixed to u/s of SFS

Mastic seal to plasterboard & window head abutment

Internal plasterboard reveal

rev: date: comment(s): name: check:

				
title: Window Head Detail (Secret Fixing)				
drg No: WBR-SVK-B04				
drawn:	check:	date:	scale:	rev:
JG	XX	06/05/21	1:5 @ A4	-
				
wienerberger house, brooks drive, Cheadle Royal Business Park, Cheadle, Cheshire, SK8 3SA				
T: +44 (0) 161 491 8200 E: design.uk@wienerberger.com				

Use of and reliance on this drawing/document is at your own risk. Wienerberger is not responsible for any reliance or actions taken based on this drawing/document and all and any such responsibility and liability of Wienerberger (whether in contract, tort (including negligence), misrepresentation, under any statute or otherwise) is expressly excluded.

Aluminium sub-frame consisting of L & T shaped vertical profiles fixed back to helping hand support brackets, fixed to provide the minimum recommended cavity of 50mm

In order to achieve adequate ventilation a 50mm continuous cavity between the back of the SVK panels and the surface of the insulation is required. It is important that the cavity is not interrupted and that air entry and exit points are provided at the top and the bottom of the facade as well as every facade aperture to ensure a sufficient air circulation

Insulation to project specific details. Moisture resistance, sound insulation, reaction to fire and UV-resistance properties all to be considered by the project Architect.

Breather membrane applied to face of cement particle board ensuring overlaps and connections are carried out to manufactures instructions.

Panel hanger

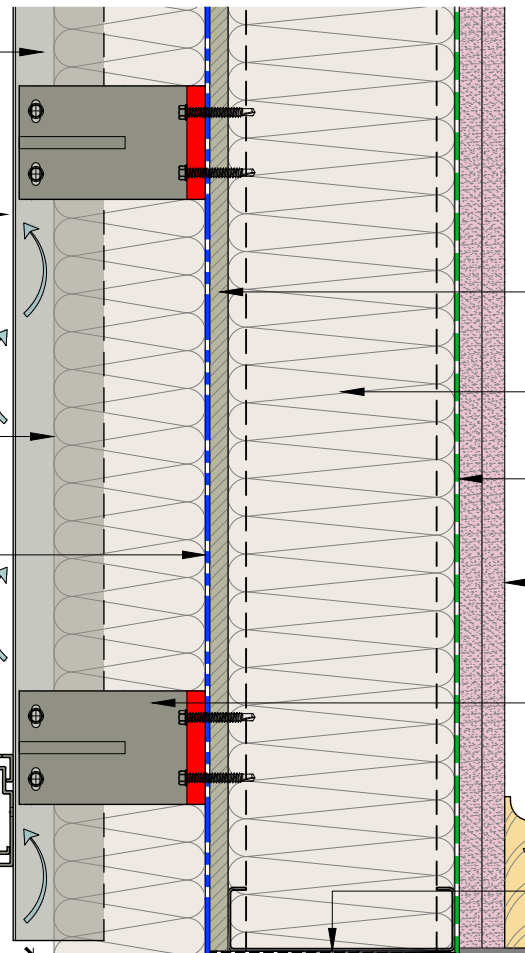
Undercut anchor

Horizontal rail

Wienerberger SVK 8mm fibre cement panel

Ventilated base with insect mesh

Plinth detail to Architects details



Cement particle board fixed back to SFS studs.

SFS with full fill insulation between studs.

Vapour control layer installed to manufactures instructions.

Typical internal finish comprising of two layers of 15mm plasterboard on 10mm dabs with plaster skim finish.

Single aluminium helping hand support bracket. Use a thermal break to minimize thermal bridges at the support bracket and substrate abutment. Always use a system that was developed for façade cladding.

DPC to base of SFS

GROUND FLOOR SLAB TO S.E DETAILS

GROUND BEAM TO S.E DETAILS

rev: date: comment(s): name: check:



title:
**Ground Floor Slab
(Secret Fixing)**

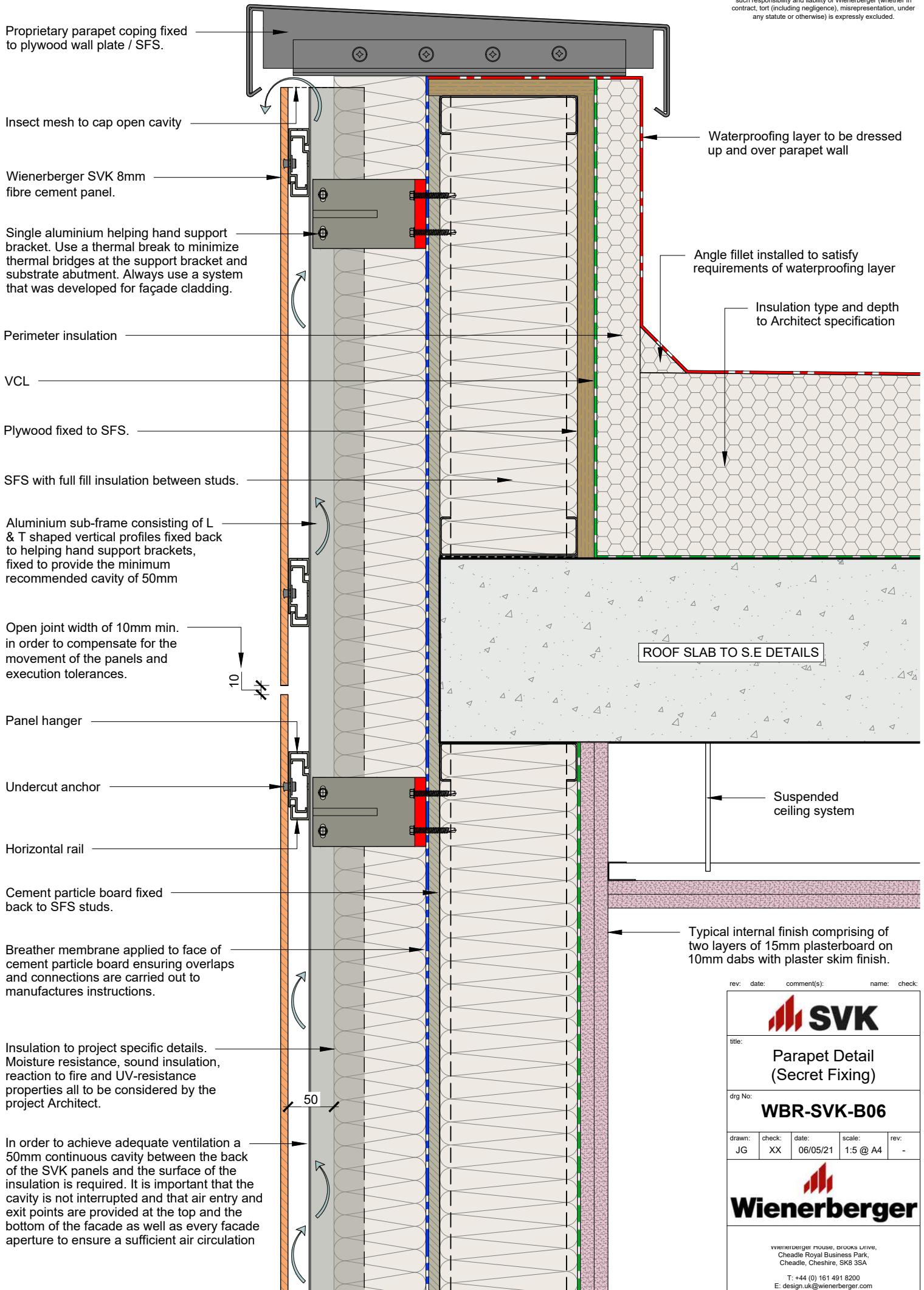
drg No:
WBR-SVK-B05

drawn:	check:	date:	scale:	rev:
JG	XX	06/05/21	1:5 @ A4	-



wienerberger house, prooks urive,
Cheadle Royal Business Park,
Cheadle, Cheshire, SK8 3SA

T: +44 (0) 161 491 8200
E: design.uk@wienerberger.com



rev: date: comment(s): name: check:

title: Parapet Detail (Secret Fixing)				
drg No: WBR-SVK-B06				
drawn: JG	check: XX	date: 06/05/21	scale: 1:5 @ A4	rev: -
<small>wienerberger house, brooks drive, Cheadle Royal Business Park, Cheadle, Cheshire, SK8 3SA</small>				
<small>T: +44 (0) 161 491 8200 E: design.uk@wienerberger.com</small>				

Open joint width of 10mm min. in order to compensate for the movement of the panels and execution tolerances.

Aluminium sub-frame consisting of L & T shaped vertical profiles fixed back to helping hand support brackets, fixed to provide the minimum recommended cavity of 50mm

Panel hanger

Undercut anchor

Insulation to project specific details. Moisture resistance, sound insulation, reaction to fire and UV-resistance properties all to be considered by the project Architect.

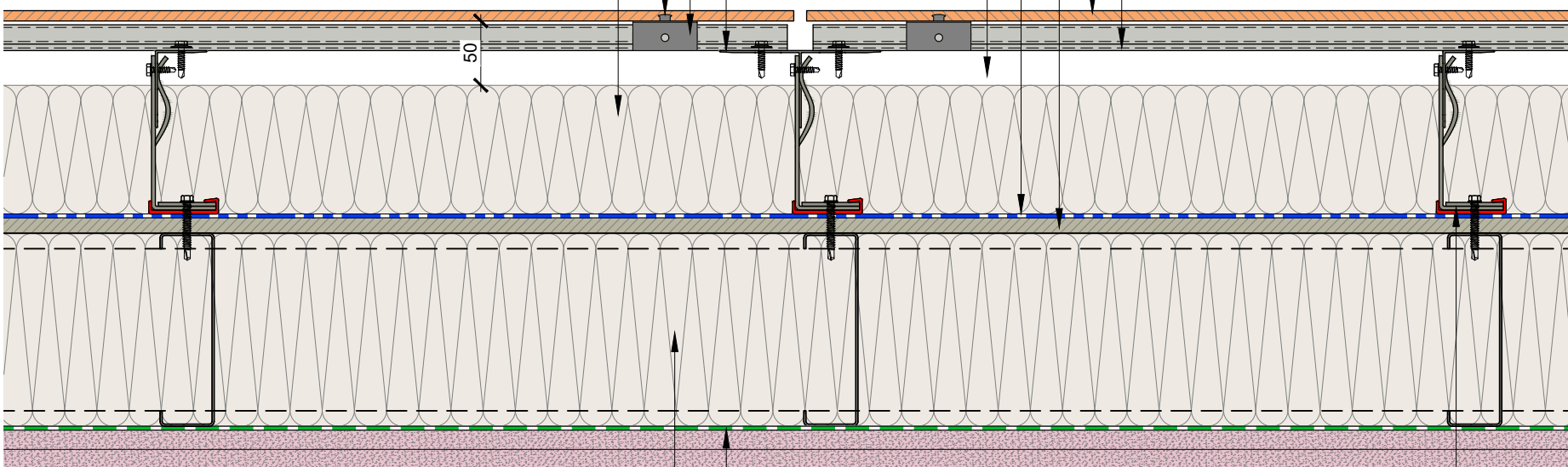
In order to achieve adequate ventilation a 50mm continuous cavity between the back of the SVK panels and the surface of the insulation is required. It is important that the cavity is not interrupted and that air entry and exit points are provided at the top and the bottom of the facade as well as every facade aperture to ensure a sufficient air circulation

Breather membrane applied to face of cement particle board ensuring overlaps and connections are carried out to manufactures instructions.

Cement particle board fixed back to SFS studs.

Wienerberger SVK 8mm fibre cement panel.

Horizontal rail



SFS with full fill insulation between studs.

Vapour control layer installed to manufactures instructions.

Typical internal finish comprising of two layers of 15mm plasterboard on 10mm dabs with plaster skim finish.

Single aluminium helping hand support bracket. Use a thermal break to minimize thermal bridges at the support bracket and substrate abutment. Always use a system that was developed for façade cladding.

rev: date: comment(s): name: check:



title:
**Vertical Joint
(Secret Fixing)**

drg No:
WBR-SVK-B07

drawn:	check:	date:	scale:	rev:
JG	XX	06/05/21	1:5 @ A4	-



Wienerberger Ltd
Wienerberger House, Brooks Drive,
Cheadle Royal Business Park,
Cheadle, Cheshire, SK8 3SA
T: +44 (0) 161 491 8200
E: design.uk@wienerberger.com

Insulation to project specific details. Moisture resistance, sound insulation, reaction to fire and UV-resistance properties all to be considered by the project Architect.

Aluminium sub-frame consisting of L & T shaped vertical profiles fixed back to helping hand support brackets, fixed to provide the minimum recommended cavity of 50mm

Panel hanger

Undercut anchor

Open joint width of 10mm min.

Window cill type and projection to architects details

10

Flashing to window reveal

EDPM seal to window frame and SFS abutment

Polysulphide mastic seal

Window to Architects specification

Mastic seal

Window fixing strap fixed to SFS

Horizontal rail

In order to achieve adequate ventilation a 50mm continuous cavity between the back of the SVK panels and the surface of the insulation is required. It is important that the cavity is not interrupted and that air entry and exit points are provided at the top and the bottom of the facade as well as every facade aperture to ensure a sufficient air circulation

Breather membrane applied to face of cement particle board ensuring overlaps and connections are carried out to manufactures instructions.

Cement particle board fixed back to SFS studs.

50

SFS with full fill insulation between studs.

Vapour control layer installed to manufactures instructions.

Typical internal finish comprising of two layers of 15mm plasterboard on 10mm dabs with plaster skim finish.

Single aluminium helping hand support bracket. Use a thermal break to minimize thermal bridges at the support bracket and substrate abutment. Always use a system that was developed for façade cladding.

rev: date: comment(s): name: check:



title:
**Window Jamb Detail
(Secret Fixing)**

drg No:
WBR-SVK-B08

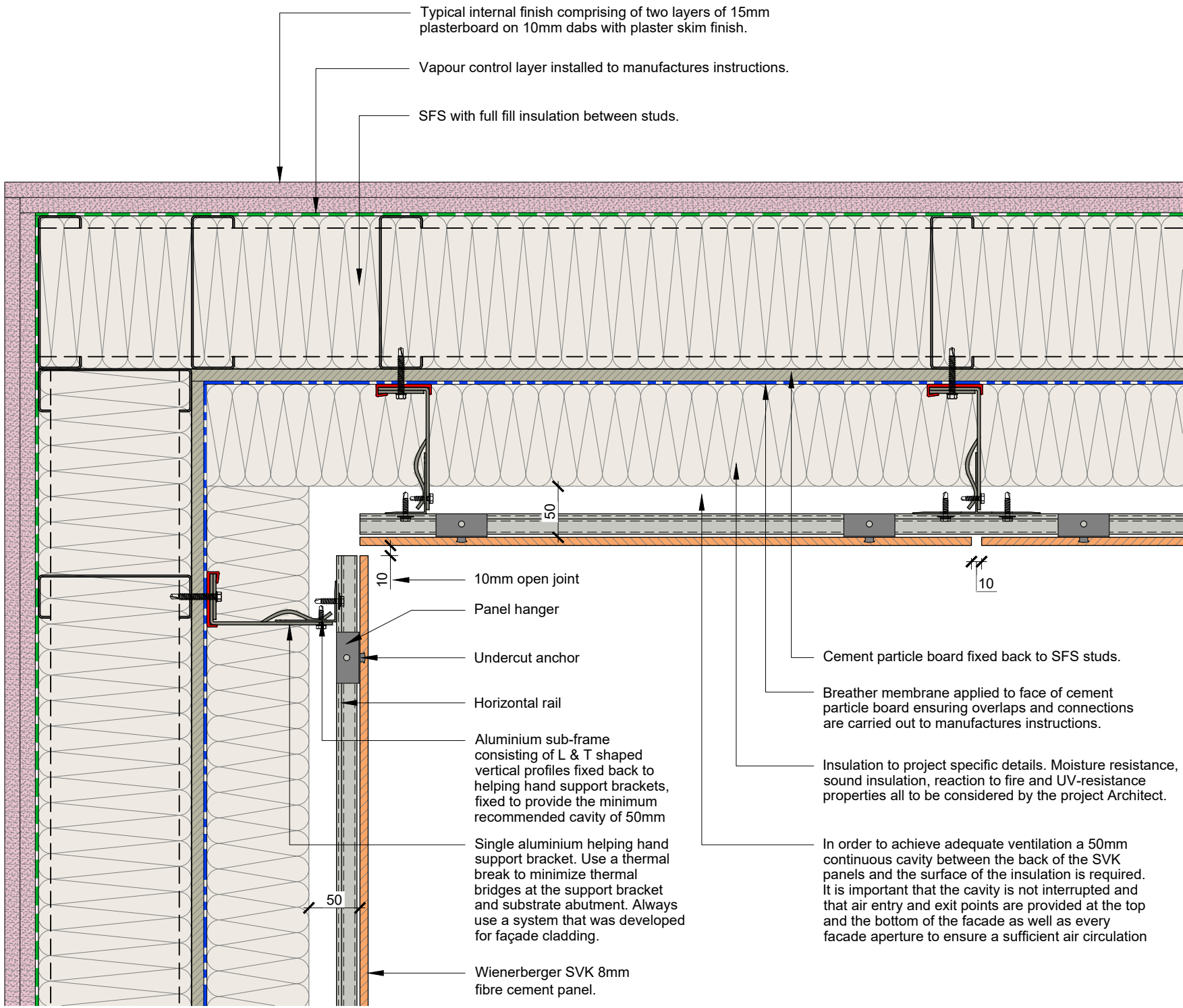
drawn:	check:	date:	scale:	rev:
JG	XX	06/05/21	1:5 @ A4	-



Wienerberger Ltd

Wienerberger House, Brooks Drive,
Cheadle Royal Business Park,
Cheadle, Cheshire, SK8 3SA

T: +44 (0) 161 491 8200
E: design.uk@wienerberger.com



Typical internal finish comprising of two layers of 15mm plasterboard on 10mm dabs with plaster skim finish.

Vapour control layer installed to manufactures instructions.

SFS with full fill insulation between studs.

10mm open joint

Panel hanger

Undercut anchor

Horizontal rail

Aluminium sub-frame consisting of L & T shaped vertical profiles fixed back to helping hand support brackets, fixed to provide the minimum recommended cavity of 50mm

Single aluminium helping hand support bracket. Use a thermal break to minimize thermal bridges at the support bracket and substrate abutment. Always use a system that was developed for façade cladding.

Wienerberger SVK 8mm fibre cement panel.

Cement particle board fixed back to SFS studs.

Breather membrane applied to face of cement particle board ensuring overlaps and connections are carried out to manufactures instructions.

Insulation to project specific details. Moisture resistance, sound insulation, reaction to fire and UV-resistance properties all to be considered by the project Architect.

In order to achieve adequate ventilation a 50mm continuous cavity between the back of the SVK panels and the surface of the insulation is required. It is important that the cavity is not interrupted and that air entry and exit points are provided at the top and the bottom of the facade as well as every facade aperture to ensure a sufficient air circulation

rev: date: comment(s): name: check:



title:
**Internal Corner Detail
(Secret Fixing)**

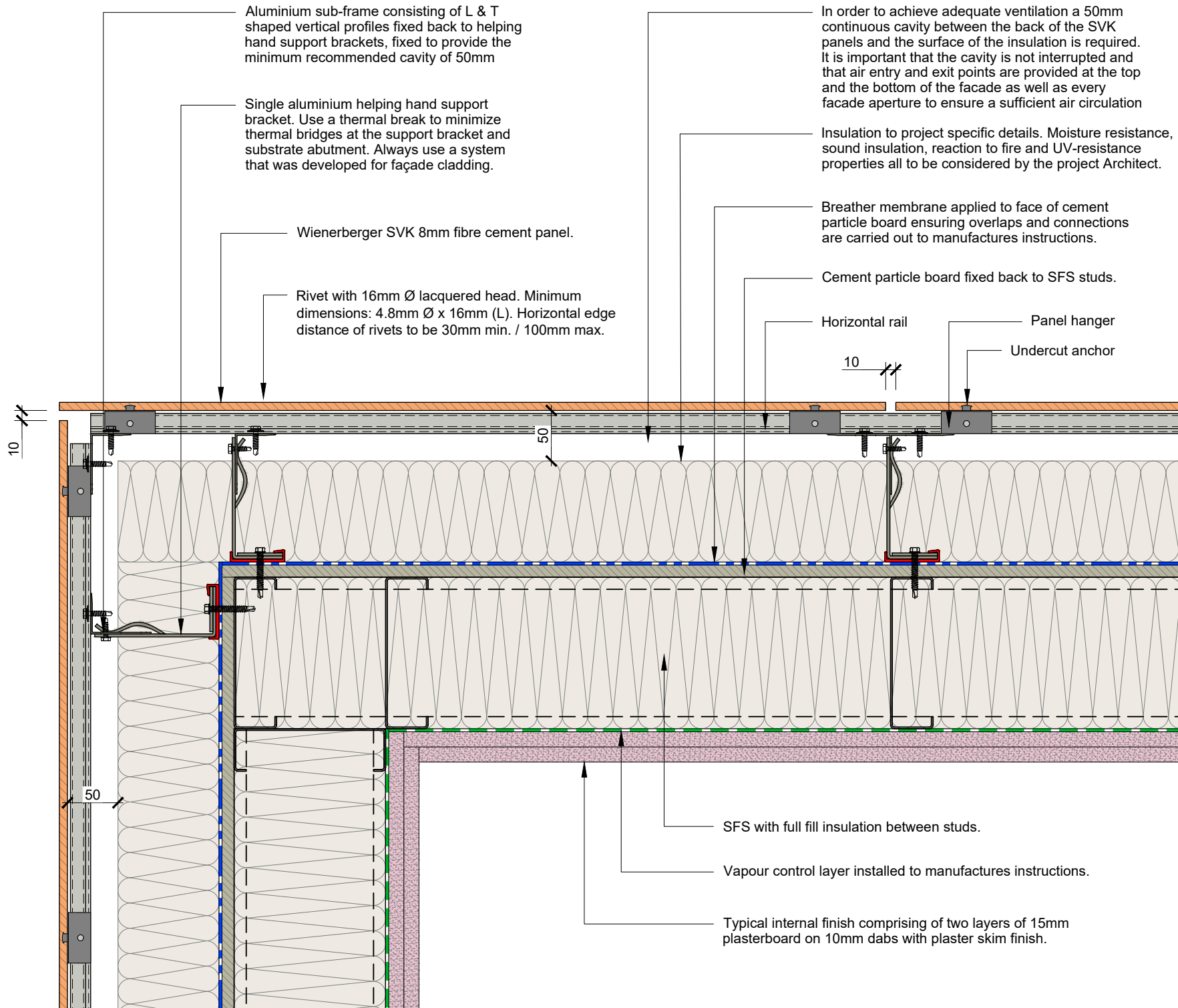
drg No:
WBR-SVK-B09

drawn:	check:	date:	scale:	rev:
JG	XX	06/05/21	1:5 @ A4	-



Wienerberger Ltd
Wienerberger House, Brooks Drive,
Cheadle Royal Business Park,
Cheadle, Cheshire, SK8 3SA

T: +44 (0) 161 491 8200
E: design.uk@wienerberger.com



rev: date: comment(s): name: check:



title:
**External Corner Detail
(Secret Fixing)**

drg No:
WBR-SVK-B10

drawn:	check:	date:	scale:	rev:
JG	XX	06/05/21	1:5 @ A4	-



wienerberger house, brooks urive,
Cheadle Royal Business Park,
Cheadle, Cheshire, SK8 3SA
T: +44 (0) 161 491 8200
E: design.uk@wienerberger.com