



PROJECT NAME

**NOTTINGHAM
MEWS HOUSE**

OGLE DRIVE

PROJECT TYPE

REFURBISHMENT

PRODUCT

MARZIALE BRICK

ARCHITECT

CHILES EVANS + CARE



Wienerberger



INTRODUCTION

BASED IN THE PARK ESTATE NEAR NOTTINGHAM CASTLE, THE RENOVATION OF NOTTINGHAM MEWS HOUSE BENEFITS THE HOMEOWNER AND THE WIDER COMMUNITY, BY IMPROVING ITS ENERGY EFFICIENCY AND RECONSTRUCTING THE FRONT FACADE WHICH WAS SOMETHING OF AN EYESORE.

This small but challenging project carefully kept to its budget while maximising on each intervention and aspect of the project. To help, the architects chose Wienerberger's Marziale brick.

The project featured in Channel 4's popular renovation series 'Ugly House To Lovely House' presented by George Clarke.



THE CHALLENGE

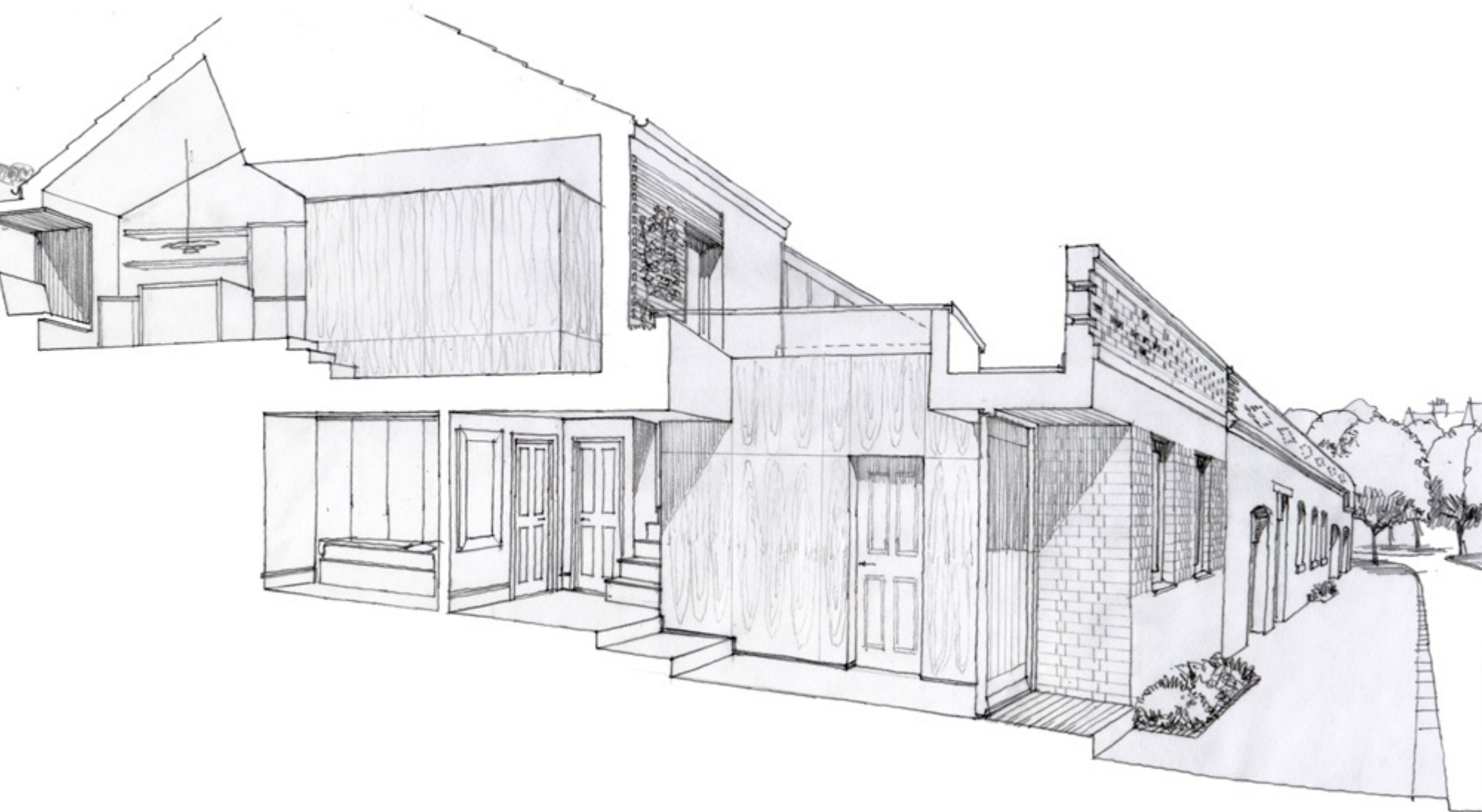
THE PARK ESTATE WAS BUILT IN THE MID 19TH CENTURY AND WAS ONCE A PRIVATE ESTATE IN THE HEART OF NOTTINGHAM BUILT AS A SERIES OF LARGE DETACHED VILLAS AND MEWS HOUSES.

The client bought the property for its idyllic location at the foot of the castle hill, rather than for its appearance which was unappealing even to the untrained eye. The original shell of the 1980's construction was of a poor standard and used inappropriate materials that clashed with the area's aesthetic and Victorian heritage.

Therefore, the client wanted to upgrade the existing fabrics to improve energy efficiency and complement the local vernacular, ensuring a real appreciation of the property from future generations.







THE SOLUTION

THE HOUSE SITS AT THE END OF A WALL THAT EXTENDS FROM THE CAVES UNDER THE CASTLE, EACH SECTION REFLECTING A NEW STAGE OF EVOLUTION THAT BECOMES RICHER AND MORE REFINED AS IT MOVES CLOSER TO THE PARK.

The project uses Wienerberger's Marziale brick to replace the original external skin with a crafted brick wall that incorporates pattern, brick projection and proportion to create a new decorative facade. bringing with it clay's natural durability, efficiency, and longevity.

THE RENEWAL OF THE FRONT FACADE WAS DRIVEN BY BOTH AESTHETIC PERCEPTION AND ENERGY PERFORMANCE. ONCE THE EXTERNAL BRICK WAS REMOVED, THE POOR STATE OF THE ORIGINAL CONSTRUCTION WAS REVEALED IN FULL. THE BUILDING HAD NO INSULATION AND THE INTERNAL SKIN OF THERMALITE BLOCKS WERE CRACKED.

The new brickwork creates a sense of materiality, proportion and decoration. It harmonises with the surrounding context whilst also improving the energy performance of the house through the insertion of insulation.

The entrance is recessed into the facade to create a sense of depth and solidity. At first floor level the street facade wall becomes a filigree brick screen through which sunlight forms dappled patterns on the roof terrace.

The project took its cues from the estate, celebrating the rich language of caves, brick walls and courtyard gardens.







CREDITS

Project	Nottingham Mews House
Site Address	Ogle Drive, Nottingham
Contractor	Terry Huggett Developments
Architects	Chiles Evans + Care Architects
Project Director	Howard Evans
Consultant	BDI Structural Solutions
Product	Marziale brick

Wienerberger Ltd

Wienerberger House,
Brooks Drive
Cheadle Royal Business Park
Cheadle, Cheshire
SK8 3SA

☎ T: 0161 491 8200
F: 0161 491 6529

✉ ukmarketingcommunications@wienerberger.com

🐦 [@wienerbergeruk](https://twitter.com/wienerbergeruk)

🌐 www.wienerberger.co.uk

